
Summary

Production Name	PP32R1 Rabbit Polyclonal Antibody
Description	Rabbit Polyclonal Antibody
Host	Rabbit
Application	WB
Reactivity	Human,Rat,Mouse

Performance

Conjugation	Unconjugated
Modification	Unmodified
Isotype	IgG
Clonality	Polyclonal
Form	Liquid
Storage	Store at 4°C short term. Aliquot and store at -20°C long term. Avoid freeze/thaw cycles.
Buffer	Liquid in PBS containing 50% glycerol, 0.5% BSA and 0.02% New type preservative N.
Purification	Affinity purification

Immunogen

Gene Name	ANP32C
Alternative Names	ANP32C; PP32R1; Acidic leucine-rich nuclear phosphoprotein 32 family member C; Phosphoprotein 32-related protein 1; Tumorigenic protein pp32r1
Gene ID	23520.0
SwissProt ID	O43423.The antiserum was produced against synthesized peptide derived from human ANP32C. AA range:121-170

Application

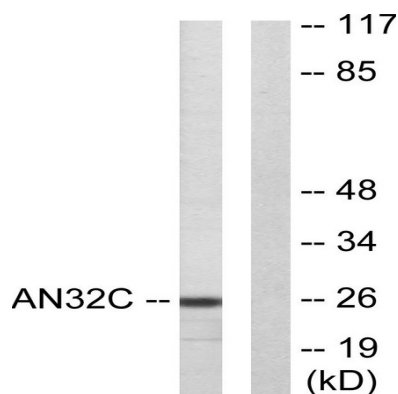
Dilution Ratio	WB 1:500-2000
Molecular Weight	26kD

Background

Phosphoprotein 32 (PP32) is a tumor suppressor that can inhibit several types of cancers, including prostate and breast cancers. The protein encoded by this gene is one of at least two proteins that are similar in amino acid sequence to PP32 and are part of the same acidic nuclear phosphoprotein gene family. However, unlike PP32, the encoded protein is tumorigenic. The tumor suppressor function of PP32 has been localized to a 25 amino acid region that is divergent between PP32 and the protein encoded by this gene. This gene does not contain introns. [provided by RefSeq, Jul 2008],caution:The His-140 polymorphism is uncertain. It has been found in prostatic cell line without corresponding normal tissue sample. Cells transfected with this variant expressed at least twice as much proteins than native cells.,similarity:Belongs to the ANP32 family.,similarity:Contains 4 LRR (leucine-rich) repeats.,tissue specificity:Expressed in activated stem cells, such as mobilized CD34+ cells and cord blood CD34+ cells, but not in resting bone marrow CD34+ cells. Expressed in a variety of neoplastic cell lines, mainly in prostatic adenocarcinoma cell lines. Not expressed in normal protastic tissue.,

Research Area

Image Data



Western blot analysis of lysates from HUVEC cells, using ANP32C Antibody. The lane on the right is blocked with the synthesized peptide.



Product Name: PP32R1 Rabbit Polyclonal Antibody
Catalog #: APRab16402



Western Blot analysis of various cells using PP32R1 Polyclonal Antibody diluted at 1: 1000

Note

For research use only.