

Product Name: PP2C κ Rabbit Polyclonal Antibody
Catalog #: APRab16400



Summary

Production Name	PP2C κ Rabbit Polyclonal Antibody
Description	Rabbit Polyclonal Antibody
Host	Rabbit
Application	IHC, WB,
Reactivity	Human, Rat, Mouse

Performance

Conjugation	Unconjugated
Modification	Unmodified
Isotype	IgG
Clonality	Polyclonal
Form	Liquid
Storage	Store at 4°C short term. Aliquot and store at -20°C long term. Avoid freeze/thaw cycles.
Buffer	Liquid in PBS containing 50% glycerol, 0.5% BSA and 0.02% New type preservative N.
Purification	Affinity purification

Immunogen

Gene Name	PPM1K
Alternative Names	PPM1K; PP2CM; Protein phosphatase 1K; mitochondrial; PP2C domain-containing protein phosphatase 1K; PP2C-like mitochondrial protein; PP2C-type mitochondrial phosphoprotein phosphatase; PTMP; Protein phosphatase 2C isoform kappa; PP2C-kappa
Gene ID	152926.0
SwissProt ID	Q8N3J5. The antiserum was produced against synthesized peptide derived from human PPM1K. AA range:205-254

Application

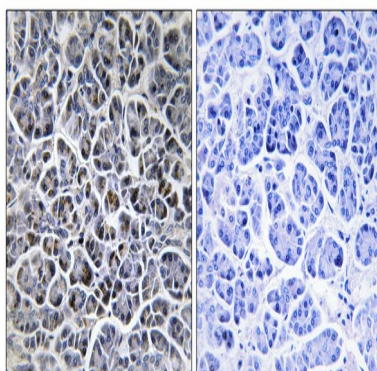
Dilution Ratio	WB 1:500 - 1:2000. IHC 1:100 - 1:300. ELISA: 1:40000..
Molecular Weight	45kD

Background

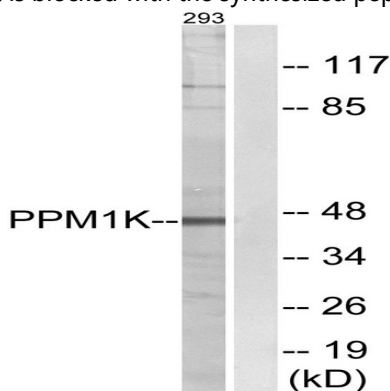
This gene encodes a member of the PPM family of Mn²⁺/Mg²⁺-dependent protein phosphatases. The encoded protein, essential for cell survival and development, is targeted to the mitochondria where it plays a key role in regulation of the mitochondrial permeability transition pore. [provided by RefSeq, Sep 2012], catalytic activity: A phosphoprotein + H₂O = a protein + phosphate., caution: Ref.9 has crystallized PPM1K in the presence of magnesium ions. However, PubMed:17336929 reported that no activity toward p-nitrophenylphosphate was seen in the absence of manganese ions and magnesium could not substitute for manganese., cofactor: Binds 1 magnesium or manganese ion per subunit., function: Regulates the mitochondrial permeability transition pore and is essential for cellular survival and development., similarity: Belongs to the PP2C family., similarity: Contains 1 PP2C-like domain.,

Research Area

Image Data

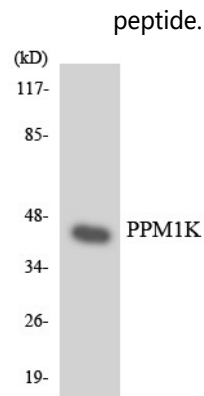


Immunohistochemistry analysis of paraffin-embedded human pancreas tissue, using PPM1K Antibody. The picture on the right is blocked with the synthesized peptide.

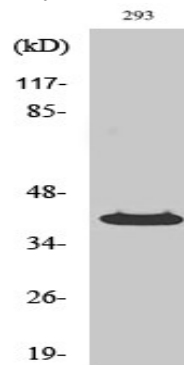


Western blot analysis of lysates from 293 cells, using PPM1K Antibody. The lane on the right is blocked with the synthesized

Product Name: PP2C κ Rabbit Polyclonal Antibody
Catalog #: APRab16400



Western blot analysis of the lysates from HeLa cells using PPM1K antibody.



Western Blot analysis of various cells using PP2C κ Polyclonal Antibody

Note

For research use only.