
Summary

Production Name	PP2Cε Rabbit Polyclonal Antibody
Description	Rabbit Polyclonal Antibody
Host	Rabbit
Application	WB,
Reactivity	Human,Mouse,Rat

Performance

Conjugation	Unconjugated
Modification	Unmodified
Isotype	IgG
Clonality	Polyclonal
Form	Liquid
Storage	Store at 4°C short term. Aliquot and store at -20°C long term. Avoid freeze/thaw cycles.
Buffer	Liquid in PBS containing 50% glycerol, 0.5% BSA and 0.02% New type preservative N.
Purification	Affinity purification

Immunogen

Gene Name	PPM1L
Alternative Names	PPM1L; PP2CE; Protein phosphatase 1L; Protein phosphatase 1-like; Protein phosphatase 2C isoform epsilon; PP2C-epsilon
Gene ID	151742.0
SwissProt ID	Q5SGD2.The antiserum was produced against synthesized peptide derived from human PPM1L. AA range:119-168

Application

Dilution Ratio	WB 1:500-2000
Molecular Weight	42kD

Product Name: PP2C ϵ Rabbit Polyclonal Antibody
Catalog #: APRab16399

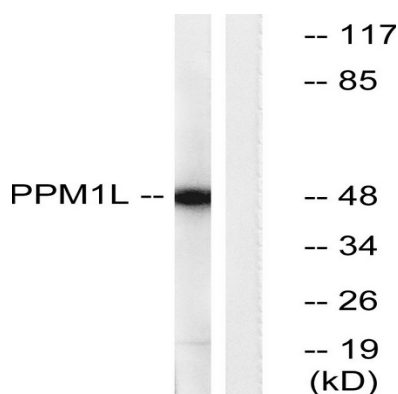


Background

The protein encoded by this gene is a magnesium or manganese-requiring phosphatase that is involved in several signaling pathways. The encoded protein downregulates apoptosis signal-regulating kinase 1, a protein that initiates a signaling cascade that leads to apoptosis when cells are subjected to cytotoxic stresses. This protein also is an endoplasmic reticulum transmembrane protein that helps regulate ceramide transport from the endoplasmic reticulum to the Golgi apparatus. Finally, this gene may be involved in adiposity since it is upregulated in adipose tissues. Several transcript variants encoding different isoforms have been found for this gene. [provided by RefSeq, Dec 2015],catalytic activity:A phosphoprotein + H₂O = a protein + phosphate.,cofactor: Binds 2 magnesium or manganese ions per subunit.,function: Acts as a suppressor of the SAPK signaling pathways by associating with and dephosphorylating MAP3K7/TAK1 and MAP3K5, and by attenuating the association between MAP3K7/TAK1 and MAP2K4 or MAP2K6.,similarity: Belongs to the PP2C family.,similarity: Contains 1 PP2C-like domain.,subunit: Interacts with MAP3K7/TAK1 (By similarity). Interacts with MAP3K5.,tissue specificity: Ubiquitous. Highly expressed in heart, placenta, lung, liver, kidney and pancreas.,

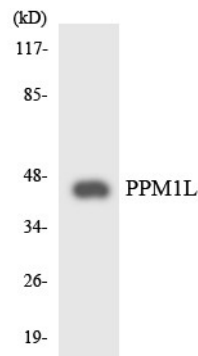
Research Area

Image Data

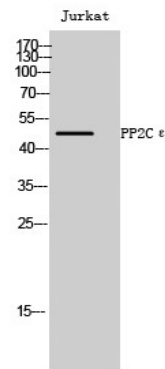


Western blot analysis of lysates from Jurkat cells, using PPM1L Antibody. The lane on the right is blocked with the synthesized peptide.

Product Name: PP2C ϵ Rabbit Polyclonal Antibody
Catalog #: APRab16399



Western blot analysis of the lysates from HepG2 cells using PPM1L antibody.



Western Blot analysis of Jurkat cells using PP2C ϵ Polyclonal Antibody

Note

For research use only.