

## Summary

<b>Production Name</b>	pNO40 Rabbit Polyclonal Antibody
<b>Description</b>	Rabbit Polyclonal Antibody
<b>Host</b>	Rabbit
<b>Application</b>	IHC,ELISA
<b>Reactivity</b>	Human,Mouse

## Performance

<b>Conjugation</b>	Unconjugated
<b>Modification</b>	Unmodified
<b>Isotype</b>	IgG
<b>Clonality</b>	Polyclonal
<b>Form</b>	Liquid
<b>Storage</b>	Store at 4°C short term. Aliquot and store at -20°C long term. Avoid freeze/thaw cycles.
<b>Buffer</b>	Liquid in PBS containing 50% glycerol, 0.5% BSA and 0.02% New type preservative N.
<b>Purification</b>	Affinity purification

## Immunogen

<b>Gene Name</b>	ZCCHC17 ZCCHC17; PS1D; HSPC243; HSPC251; LDC4; Nucleolar protein of 40 kDa; pNO40; Pnn-
<b>Alternative Names</b>	interacting nucleolar protein; Putative S1 RNA-binding domain protein; PS1D protein; Zinc finger CCHC domain-containing protein 17
<b>Gene ID</b>	51538.0
<b>SwissProt ID</b>	Q9NP64.The antiserum was produced against synthesized peptide derived from human ZCCHC17. AA range:51-100

## Application

<b>Dilution Ratio</b>	IHC 1:100-1:300 ELISA: 1:20000
<b>Molecular Weight</b>	

**Product Name: pNO40 Rabbit Polyclonal Antibody**  
**Catalog #: APRab16328**



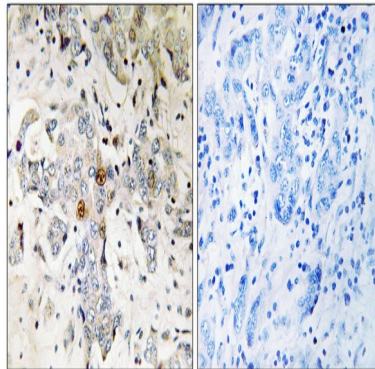
---

## Background

similarity:Contains 1 CCHC-type zinc finger.,similarity:Contains 1 S1 motif domain.,subunit:Interacts with PNN. Associates with the 60S ribosomal subunit.,similarity:Contains 1 CCHC-type zinc finger.,similarity:Contains 1 S1 motif domain.,subunit:Interacts with PNN. Associates with the 60S ribosomal subunit,

## Research Area

## Image Data



Immunohistochemistry analysis of paraffin-embedded human breast carcinoma tissue, using ZCCHC17 Antibody. The picture on the right is blocked with the synthesized peptide.

## Note

For research use only.