

Product Name: PLS2 Rabbit Polyclonal Antibody
Catalog #: APRab16284



Summary

Production Name	PLS2 Rabbit Polyclonal Antibody
Description	Rabbit Polyclonal Antibody
Host	Rabbit
Application	WB
Reactivity	Human,Rat,Mouse

Performance

Conjugation	Unconjugated
Modification	Unmodified
Isotype	IgG
Clonality	Polyclonal
Form	Liquid
Storage	Store at 4°C short term. Aliquot and store at -20°C long term. Avoid freeze/thaw cycles.
Buffer	Liquid in PBS containing 50% glycerol, and 0.02% New type preservative N.
Purification	Affinity purification

Immunogen

Gene Name	PLSCR2
Alternative Names	
Gene ID	57047.0
SwissProt ID	Q9NRY7.Synthesized peptide derived from human protein . at AA range: 90-170

Application

Dilution Ratio	WB 1:500-2000 ELISA 1:5000-20000
Molecular Weight	24kD

Background

This gene encodes a member of the phospholipid scramblase family. Phospholipid scramblases are membrane proteins that mediate calcium-dependent, non-specific movement of plasma membrane phospholipids and phosphatidylserine

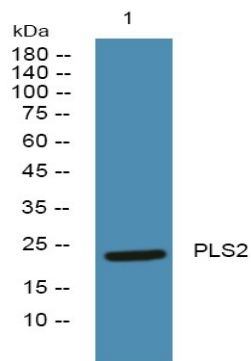
Product Name: PLS2 Rabbit Polyclonal Antibody
Catalog #: APRab16284



exposure. The encoded protein contains a low affinity calcium binding motif and may play a role in blood coagulation and apoptosis. Alternatively spliced transcript variants encoding multiple isoforms have been observed for this gene. [provided by RefSeq, Jan 2011],cofactor:Calcium.,function:May mediate accelerated ATP-independent bidirectional transbilayer migration of phospholipids upon binding calcium ions that results in a loss of phospholipid asymmetry in the plasma membrane. May play a central role in the initiation of fibrin clot formation, in the activation of mast cells and in the recognition of apoptotic and injured cells by the reticuloendothelial system.,online information:Scramblase entry,similarity:Belongs to the phospholipid scramblase family.,tissue specificity:Exclusively expressed in testis.,

Research Area

Image Data



Western blot analysis of lysates from PC12 cells, primary antibody was diluted at 1:1000, 4° over night

Note

For research use only.