

Product Name: PLK2 Rabbit Polyclonal Antibody
Catalog #: APRab16276



Summary

Production Name	PLK2 Rabbit Polyclonal Antibody
Description	Rabbit Polyclonal Antibody
Host	Rabbit
Application	IHC,ELISA
Reactivity	Human,Rat

Performance

Conjugation	Unconjugated
Modification	Unmodified
Isotype	IgG
Clonality	Polyclonal
Form	Liquid
Storage	Store at 4°C short term. Aliquot and store at -20°C long term. Avoid freeze/thaw cycles.
Buffer	Liquid in PBS containing 50% glycerol, 0.5% BSA and 0.02% New type preservative N.
Purification	Affinity purification

Immunogen

Gene Name	PLK2 SNK
Alternative Names	Serine/threonine-protein kinase PLK2 (EC 2.7.11.21;Polo-like kinase 2;PLK-2;hPlk2;Serine/threonine-protein kinase SNK;hSNK;Serum-inducible kinase)
Gene ID	10769.0
SwissProt ID	Q9NYY3.Synthetic peptide from human protein at AA range: 377-451

Application

Dilution Ratio	IHC 1:50-200 ELISA 1:10000-20000
Molecular Weight	

Background

The protein encoded by this gene is a member of the polo family of serine/threonine protein kinases that have a role in

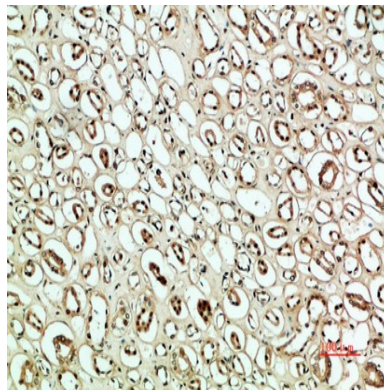
Product Name: PLK2 Rabbit Polyclonal Antibody
Catalog #: APRab16276



normal cell division. This gene is most abundantly expressed in testis, spleen and fetal tissues, and its expression is inducible by serum, suggesting that it may also play an important role in cells undergoing rapid cell division. Alternatively spliced transcript variants encoding different isoforms have been found for this gene. [provided by RefSeq, Nov 2011],catalytic activity:ATP + a protein = ADP + a phosphoprotein.,function:May play a role in the division of at least some cell types, such as fibroblasts, and could function in embryogenesis, wound healing or neoplasia.,similarity:Belongs to the protein kinase superfamily.,similarity:Belongs to the protein kinase superfamily. Ser/Thr protein kinase family. CDC5/Polo subfamily.,similarity:Contains 1 protein kinase domain.,similarity:Contains 2 POLO box domains.,

Research Area

Image Data



Immunohistochemical analysis of paraffin-embedded human-kidney, antibody was diluted at 1:200

Note

For research use only.