

Product Name: PLIN2 Rabbit Polyclonal Antibody
Catalog #: APRab16270



Summary

Production Name	PLIN2 Rabbit Polyclonal Antibody
Description	Rabbit Polyclonal Antibody
Host	Rabbit
Application	WB
Reactivity	Human,Rat,Mouse

Performance

Conjugation	Unconjugated
Modification	Unmodified
Isotype	IgG
Clonality	Polyclonal
Form	Liquid
Storage	Store at 4°C short term. Aliquot and store at -20°C long term. Avoid freeze/thaw cycles.
Buffer	Liquid in PBS containing 50% glycerol, and 0.02% New type preservative N.
Purification	Affinity purification

Immunogen

Gene Name	PLIN2 ADFP
Alternative Names	
Gene ID	123.0
SwissProt ID	Q99541.Synthesized peptide derived from part region of human protein

Application

Dilution Ratio	WB 1:500-2000 ELISA 1:5000-20000
Molecular Weight	48kD

Background

The protein encoded by this gene belongs to the perilipin family, members of which coat intracellular lipid storage droplets. This protein is associated with the lipid globule surface membrane material, and maybe involved in development

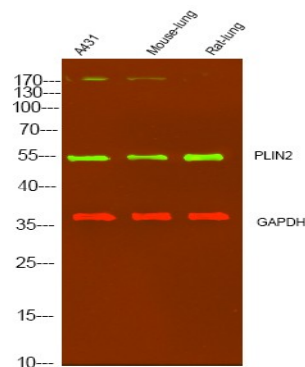
Product Name: PLIN2 Rabbit Polyclonal Antibody
Catalog #: APRab16270



and maintenance of adipose tissue. However, it is not restricted to adipocytes as previously thought, but is found in a wide range of cultured cell lines, including fibroblasts, endothelial and epithelial cells, and tissues, such as lactating mammary gland, adrenal cortex, Sertoli and Leydig cells, and hepatocytes in alcoholic liver cirrhosis, suggesting that it may serve as a marker of lipid accumulation in diverse cell types and diseases. Alternatively spliced transcript variants have been found for this gene. [provided by RefSeq, Mar 2011],lipid transport, response to organic substance, lipid localization, response to organic cyclic substance, monocarboxylic acid transport, organic acid transport, fatty acid transport, long-chain fatty acid transport, lipid storage, response to drug, carboxylic acid transport,

Research Area

Image Data



Western Blot analysis of various cell lysis. Primary Antibody was diluted at 1:1000. Secondary antibody was diluted at 1:10000

Note

For research use only.