

Summary

Production Name	PLC-XD1 Rabbit Polyclonal Antibody
Description	Rabbit Polyclonal Antibody
Host	Rabbit
Application	IHC,ELISA
Reactivity	Human,Rat,Mouse

Performance

Conjugation	Unconjugated
Modification	Unmodified
Isotype	IgG
Clonality	Polyclonal
Form	Liquid
Storage	Store at 4°C short term. Aliquot and store at -20°C long term. Avoid freeze/thaw cycles.
Buffer	Liquid in PBS containing 50% glycerol, 0.5% BSA and 0.02% New type preservative N.
Purification	Affinity purification

Immunogen

Gene Name	PLCXD1
Alternative Names	PLCXD1; PI-PLC X domain-containing protein 1
Gene ID	55344.0
SwissProt ID	Q9NUJ7.The antiserum was produced against synthesized peptide derived from human PLCXD1. AA range:187-236

Application

Dilution Ratio	IHC 1:100-1:300 ELISA: 1:40000
Molecular Weight	

Background

This gene is the most terminal protein-coding gene in the pseudoautosomal (PAR) region on chromosomes X and Y.

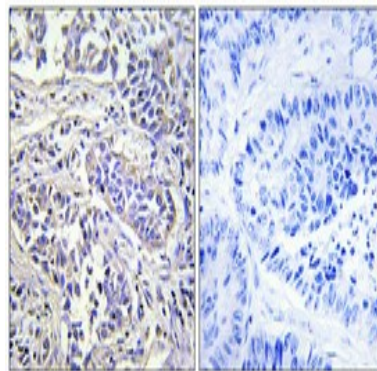
Product Name: PLC-XD1 Rabbit Polyclonal Antibody
Catalog #: APRab16258



Alternate splicing results in multiple transcript variants. [provided by RefSeq, Mar 2010],miscellaneous:The gene encoding for this protein is located in the pseudoautosomal region 1 (PAR1) of X and Y chromosomes.,similarity:Contains 1 PI-PLC X-box domain.,

Research Area

Image Data



Immunohistochemical analysis of paraffin-embedded Human lung cancer. Antibody was diluted at 1:100 (4° overnight) . High-pressure and temperature Tris-EDTA,pH8.0 was used for antigen retrieval. Negative control (right) obtained from antibody was pre-absorbed by immunogen peptide.

Note

For research use only.