

Product Name: Plakophilin 4 Rabbit Polyclonal Antibody
Catalog #: APRab16238

Summary

Production Name	Plakophilin 4 Rabbit Polyclonal Antibody
Description	Rabbit Polyclonal Antibody
Host	Rabbit
Application	WB,IHC,ELISA
Reactivity	Human,Mouse

Performance

Conjugation	Unconjugated
Modification	Unmodified
Isotype	IgG
Clonality	Polyclonal
Form	Liquid
Storage	Store at 4°C short term. Aliquot and store at -20°C long term. Avoid freeze/thaw cycles.
Buffer	Liquid in PBS containing 50% glycerol, 0.5% BSA and 0.02% New type preservative N.
Purification	Affinity purification

Immunogen

Gene Name	PKP4
Alternative Names	PKP4; Plakophilin-4; p0071
Gene ID	604276.0
SwissProt ID	Q99569.The antiserum was produced against synthesized peptide derived from human PKP4. AA range:185-234

Application

Dilution Ratio	WB 1:500 - 1:2000. IHC 1:100 - 1:300. ELISA: 1:5000..
Molecular Weight	130kD

Background

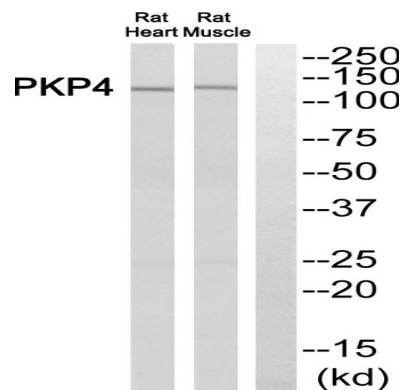
Product Name: Plakophilin 4 Rabbit Polyclonal Antibody
Catalog #: APRab16238



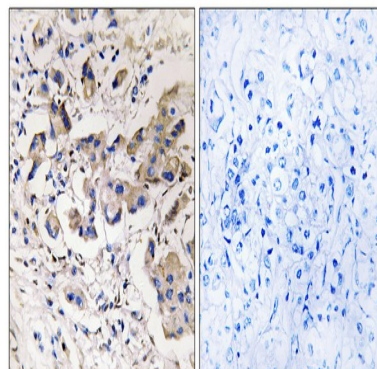
Armadillo-like proteins are characterized by a series of armadillo repeats, first defined in the *Drosophila* 'armadillo' gene product, that are typically 42 to 45 amino acids in length. These proteins can be divided into subfamilies based on their number of repeats, their overall sequence similarity, and the dispersion of the repeats throughout their sequences. Members of the p120(ctn)/plakophilin subfamily of Armadillo-like proteins, including CTNND1, CTNND2, PKP1, PKP2, PKP4, and ARVCF. PKP4 may be a component of desmosomal plaque and other adhesion plaques and is thought to be involved in regulating junctional plaque organization and cadherin function. Multiple transcript variants encoding different isoforms have been found for this gene. [provided by RefSeq, Feb 2015],function:May play a role in junctional plaques.,PTM:Phosphorylated upon DNA damage, probably by ATM or ATR.,similarity:Belongs to the beta-catenin family.,similarity:Contains 9 ARM repeats.,subcellular location:Colocalized with desmoplakin at desmosomal junctional plaques in cultured epithelial cells.,subunit:Interacts with PDZD2,.

Research Area

Image Data

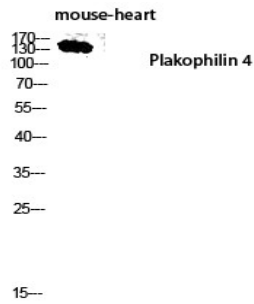


Western blot analysis of PKP4 Antibody. The lane on the right is blocked with the PKP4 peptide.



Immunohistochemistry analysis of paraffin-embedded human breast carcinoma, using PKP4 Antibody. The lane on the right is blocked with the PKP4 peptide.

Product Name: Plakophilin 4 Rabbit Polyclonal Antibody
Catalog #: APRab16238



Western blot analysis of mouse-heart lysis using Plakophilin 4 antibody. Antibody was diluted at 1:2000

Note

For research use only.