

Product Name: PLA1A Rabbit Polyclonal Antibody
Catalog #: APRab16232



Summary

Production Name	PLA1A Rabbit Polyclonal Antibody
Description	Rabbit Polyclonal Antibody
Host	Rabbit
Application	WB,IHC,ELISA
Reactivity	Human,Rat,Mouse

Performance

Conjugation	Unconjugated
Modification	Unmodified
Isotype	IgG
Clonality	Polyclonal
Form	Liquid
Storage	Store at 4°C short term. Aliquot and store at -20°C long term. Avoid freeze/thaw cycles.
Buffer	Liquid in PBS containing 50% glycerol, 0.5% BSA and 0.02% New type preservative N.
Purification	Affinity purification

Immunogen

Gene Name	PLA1A
Alternative Names	PLA1A; NMD; PSPLA1; Phospholipase A1 member A; Phosphatidylserine-specific phospholipase A1; PS-PLA1
Gene ID	51365.0
SwissProt ID	Q53H76.The antiserum was produced against synthesized peptide derived from human PLA1A. AA range:381-430

Application

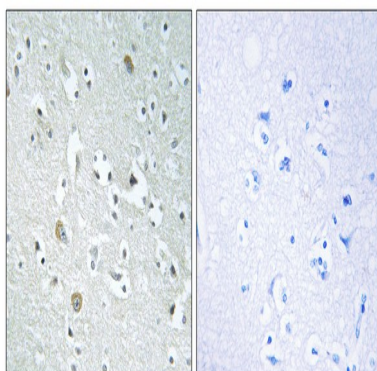
Dilution Ratio	WB 1:500 - 1:2000. IHC 1:100 - 1:300. ELISA: 1:5000..
Molecular Weight	45-50kD

Background

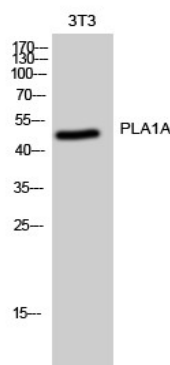
The protein encoded by this gene is a phospholipase that hydrolyzes fatty acids at the sn-1 position of phosphatidylserine and 1-acyl-2-lysophosphatidylserine. This secreted protein hydrolyzes phosphatidylserine in liposomes. Three transcript variants encoding different isoforms have been found for this gene.[provided by RefSeq, May 2011],function:Hydrolyzes the ester bond at the sn-1 position of glycerophospholipids and produces 2-acyl lysophospholipids. Hydrolyzes phosphatidylserine (PS) in the form of liposomes and 1-acyl-2 lysophosphatidylserine (lyso-PS), but not triolein, phosphatidylcholine (PC), phosphatidylethanolamine (PE), phosphatidic acid (PA) or phosphatidylinositol (PI). Isoform 2 hydrolyzes lyso-PS but not PS. Hydrolysis of lyso-PS in peritoneal mast cells activated by receptors for IgE leads to stimulate histamine production.,similarity:Belongs to the AB hydrolase superfamily. Lipase family.,tissue specificity:Widely expressed. Expressed in placenta, prostate and liver. Weakly or not expressed in skin, leukocytes, platelets, colon, spleen, lung, muscle and kidney.,

Research Area

Image Data



Immunohistochemistry analysis of paraffin-embedded human brain, using PLA1A Antibody. The picture on the right is blocked with the synthesized peptide.



Western Blot analysis of 3T3 cells using PLA1A Polyclonal Antibody

Product Name: PLA1A Rabbit Polyclonal Antibody
Catalog #: APRab16232



Note

For research use only.