
Summary

Production Name	PKR1 Rabbit Polyclonal Antibody
Description	Rabbit Polyclonal Antibody
Host	Rabbit
Application	WB,ELISA
Reactivity	Human,Mouse,Rat

Performance

Conjugation	Unconjugated
Modification	Unmodified
Isotype	IgG
Clonality	Polyclonal
Form	Liquid
Storage	Store at 4°C short term. Aliquot and store at -20°C long term. Avoid freeze/thaw cycles.
Buffer	Liquid in PBS containing 50% glycerol, 0.5% BSA and 0.02% New type preservative N.
Purification	Affinity purification

Immunogen

Gene Name	PROKR1
Alternative Names	PROKR1; GPR73; PKR1; Prokineticin receptor 1; PK-R1; G-protein coupled receptor 73; G-protein coupled receptor ZAQ; GPR73a
Gene ID	10887.0
SwissProt ID	Q8TCW9.The antiserum was produced against synthesized peptide derived from human PKR1. AA range:19-68

Application

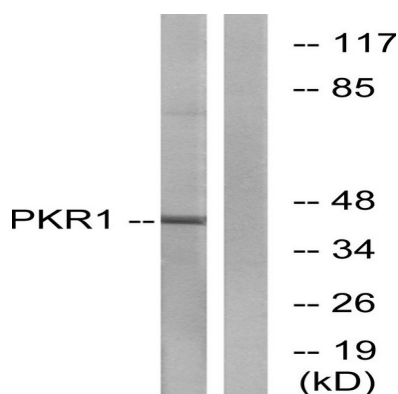
Dilution Ratio	WB 1:500-2000; ELISA 1:5000-20000
Molecular Weight	45kD

Background

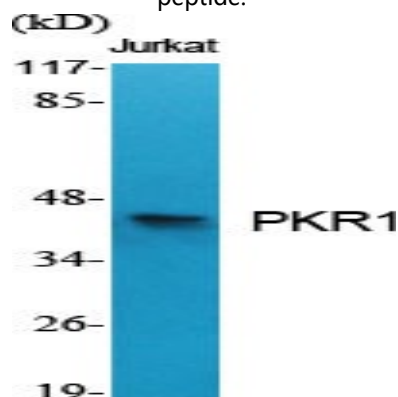
prokineticin receptor 1 (PROKR1) Homo sapiens This gene encodes a member of the G-protein-coupled receptor family. The encoded protein binds to prokineticins (1 and 2), leading to the activation of MAPK and STAT signaling pathways. Prokineticins are protein ligands involved in angiogenesis and inflammation. The encoded protein is expressed in peripheral tissues such as those comprising the circulatory system, lungs, reproductive system, endocrine system and the gastrointestinal system. The protein may be involved in signaling in human fetal ovary during initiation of primordial follicle formation. Sequence variants in this gene may be associated with recurrent miscarriage. [provided by RefSeq, Aug 2016],function:Receptor for prokineticin 1. Exclusively coupled to the G(q) subclass of heteromeric G proteins. Activation leads to mobilization of calcium, stimulation of phosphoinositide turnover and activation of p44/p42 mitogen-activated protein kinase.,similarity:Belongs to the G-protein coupled receptor 1 family.,tissue specificity:Expressed in the stomach, throughout the small intestine, colon, rectum, thyroid gland, pituitary gland, salivary gland, adrenal gland, testis, ovary, brain, spleen, prostate and pancreas.,

Research Area

Image Data



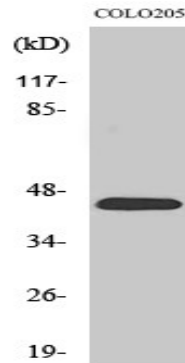
Western blot analysis of lysates from COLO cells, using PKR1 Antibody. The lane on the right is blocked with the synthesized peptide.



Product Name: PKR1 Rabbit Polyclonal Antibody
Catalog #: APRab16229



Western Blot analysis of various cells using PKR1 Polyclonal Antibody



Western Blot analysis of COLO205 cells using PKR1 Polyclonal Antibody

Note

For research use only.