

Summary

Production Name	PKAy cat Rabbit Polyclonal Antibody
Description	Rabbit Polyclonal Antibody
Host	Rabbit
Application	WB,ELISA
Reactivity	Human,Rat,Mouse

Performance

Conjugation	Unconjugated
Modification	Unmodified
Isotype	IgG
Clonality	Polyclonal
Form	Liquid
Storage	Store at 4°C short term. Aliquot and store at -20°C long term. Avoid freeze/thaw cycles.
Buffer	Liquid in PBS containing 50% glycerol, 0.5% BSA and 0.02% New type preservative N.
Purification	Affinity purification

Immunogen

Gene Name	PRKACG
Alternative Names	PRKACG; cAMP-dependent protein kinase catalytic subunit gamma; PKA C-gamma
Gene ID	5568.0
SwissProt ID	P22612.The antiserum was produced against synthesized peptide derived from human KAPCG. AA range:1-50

Application

Dilution Ratio	WB 1:500 - 1:2000. ELISA: 1:10000
Molecular Weight	40kD

Background

Product Name: PKA γ cat Rabbit Polyclonal Antibody
Catalog #: APRab16188

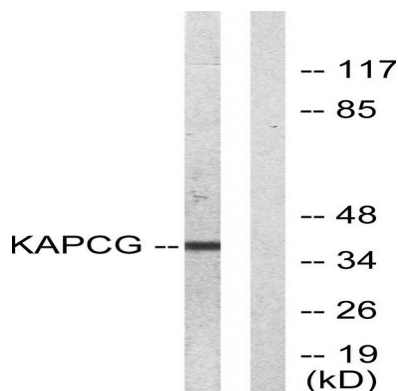


Cyclic AMP-dependent protein kinase (PKA) consists of two catalytic subunits and a regulatory subunit dimer. This gene encodes the gamma form of its catalytic subunit. The gene is intronless and is thought to be a retrotransposon derived from the gene for the alpha form of the PKA catalytic subunit. [provided by RefSeq, Jul 2008],catalytic activity:ATP + a protein = ADP + a phosphoprotein.,enzyme regulation:Activated by cAMP.,function:Phosphorylates a large number of substrates in the cytoplasm and the nucleus.,similarity:Belongs to the protein kinase superfamily. AGC Ser/Thr protein kinase family. cAMP subfamily.,similarity:Contains 1 AGC-kinase C-terminal domain.,similarity:Contains 1 protein kinase domain.,subunit:A number of inactive tetrameric holoenzymes are produced by the combination of homo- or heterodimers of the different regulatory subunits associated with two catalytic subunits. cAMP causes the dissociation of the inactive holoenzyme into a dimer of regulatory subunits bound to four cAMP and two free monomeric catalytic subunits.,tissue specificity:Testis specific. But important tissues such as brain and ovary have not been analyzed for the content of transcript.,

Research Area

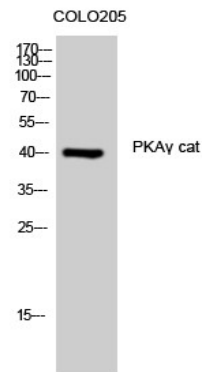
MAPK_ERK_Growth;MAPK_G_Protein;Calcium;Chemokine;Oocyte meiosis;Apoptosis_Inhibition;Apoptosis_Mitochondrial;Apoptosis_Overview;Vascular smooth muscle contraction;WNT;WNT-TCF;Hedgehog;Gap junction;Long-term potentiation;Olfactory transduction;Taste transduction;Insulin_Receptor;GnRH;Progesterone-mediated oocyte maturation;Melanogenesis;Prion diseases;Vibrio cholerae infection;Dilated cardiomyopathy;

Image Data



Western blot analysis of lysates from COLO205 cells, using KAPCG Antibody. The lane on the right is blocked with the synthesized peptide.

Product Name: PKA γ cat Rabbit Polyclonal Antibody
Catalog #: APRab16188



Western Blot analysis of COLO205 cells using PKA γ cat Polyclonal Antibody

Note

For research use only.