

Summary

Production Name	Pitx1 Rabbit Polyclonal Antibody
Description	Rabbit Polyclonal Antibody
Host	Rabbit
Application	WB,ELISA
Reactivity	Human,Mouse,Rat

Performance

Conjugation	Unconjugated
Modification	Unmodified
Isotype	IgG
Clonality	Polyclonal
Form	Liquid
Storage	Store at 4°C short term. Aliquot and store at -20°C long term. Avoid freeze/thaw cycles.
Buffer	Liquid in PBS containing 50% glycerol, 0.5% BSA and 0.02% New type preservative N.
Purification	Affinity purification

Immunogen

Gene Name	PITX1
Alternative Names	PITX1; BFT; PTX1; Pituitary homeobox 1; Hindlimb-expressed homeobox protein backfoot; Homeobox protein PITX1; Paired-like homeodomain transcription factor 1
Gene ID	5307.0
SwissProt ID	P78337.The antiserum was produced against synthesized peptide derived from human PITX1. AA range:121-170

Application

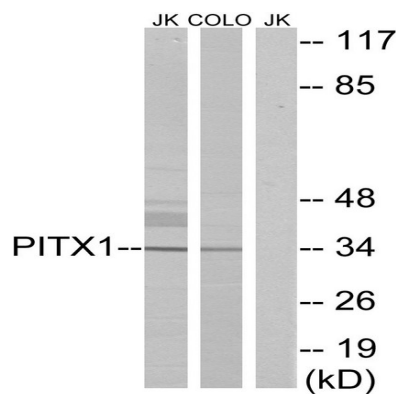
Dilution Ratio	WB 1:500 - 1:2000. ELISA: 1:20000..
Molecular Weight	34kD

Background

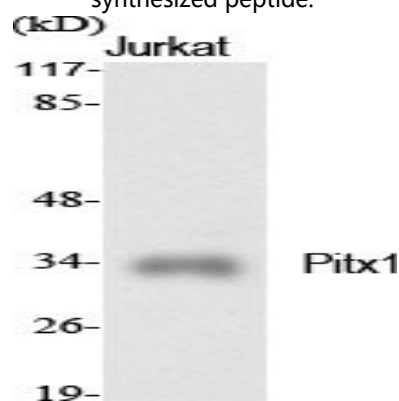
This gene encodes a member of the RIEG/PITX homeobox family, which is in the bicoid class of homeodomain proteins. Members of this family are involved in organ development and left-right asymmetry. This protein acts as a transcriptional regulator involved in basal and hormone-regulated activity of prolactin. [provided by RefSeq, Jul 2008],function:May play a role in the development of anterior structures, and in particular, the brain and facies and in specifying the identity or structure of hindlimb.,similarity:Belongs to the paired homeobox family. Bicoid subfamily.,similarity:Contains 1 homeobox DNA-binding domain.,similarity:Contains 1 OAR domain.,

Research Area

Image Data

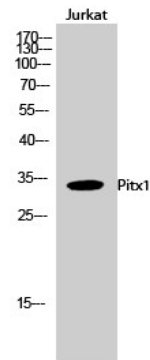


Western blot analysis of lysates from Jurkat and COLO cells, using PITX1 Antibody. The lane on the right is blocked with the synthesized peptide.



Western Blot analysis of various cells using Pitx1 Polyclonal Antibody cells nucleus extracted by Minute TM Cytoplasmic and Nuclear Fractionation kit (SC-003, Inventbiotech, MN, USA) .

Product Name: Pitx1 Rabbit Polyclonal Antibody
Catalog #: APRab16167



Western Blot analysis of Jurkat cells using Pitx1 Polyclonal Antibody cells nucleus extracted by Minute TM Cytoplasmic and Nuclear Fractionation kit (SC-003, Inventbiotech, MN, USA) .

Note

For research use only.