

Summary

Production Name	PinX1 Rabbit Polyclonal Antibody
Description	Rabbit Polyclonal Antibody
Host	Rabbit
Application	IHC,ELISA
Reactivity	Human,Rat,Mouse

Performance

Conjugation	Unconjugated
Modification	Unmodified
Isotype	IgG
Clonality	Polyclonal
Form	Liquid
Storage	Store at 4°C short term. Aliquot and store at -20°C long term. Avoid freeze/thaw cycles.
Buffer	Liquid in PBS containing 50% glycerol, 0.5% BSA and 0.02% New type preservative N.
Purification	Affinity purification

Immunogen

Gene Name	PINX1
Alternative Names	PINX1; LPTL; LPTS; PIN2/TERF1-interacting telomerase inhibitor 1; Liver-related putative tumor suppressor; Pin2-interacting protein X1; Protein 67-11-3; TRF1-interacting protein 1
Gene ID	54984.0
SwissProt ID	Q96BK5.The antiserum was produced against synthesized peptide derived from human PINX1. AA range:121-170

Application

Dilution Ratio	IHC 1:100-1:300 ELISA: 1:20000
Molecular Weight	

Product Name: PinX1 Rabbit Polyclonal Antibody
Catalog #: APRab16159

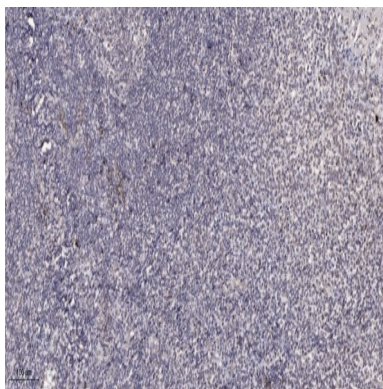


Background

domain:The TID (telomerase inhibiting domain) domain is sufficient to bind TERT and inhibit its activity.,function:Inhibits telomerase activity. May inhibit cell proliferation and act as tumor suppressor.,similarity:Belongs to the PINX1 family.,similarity:Contains 1 G-patch domain.,subcellular location:In nucleoli and at telomere speckles.,subunit:Binds to MCRS1, TERT and TERF1.,tissue specificity:Ubiquitous; expressed at low levels. Not detectable in a number of hepatocarcinoma cell lines.,domain:The TID (telomerase inhibiting domain) domain is sufficient to bind TERT and inhibit its activity.,function:Inhibits telomerase activity. May inhibit cell proliferation and act as tumor suppressor.,similarity:Belongs to the PINX1 family.,similarity:Contains 1 G-patch domain.,subcellular location:In nucleoli and at telomere speckles.,subunit:Binds to MCRS1, TERT and TERF1.,tissue specificity:Ubiquitous; expressed at low levels. Not detectable in a number of hepatocarcinoma cell lines.,

Research Area

Image Data



Immunohistochemical analysis of paraffin-embedded human tonsil. 1, Antibody was diluted at 1:200 (4° overnight) . 2, Tris-EDTA,pH9.0 was used for antigen retrieval. 3,Secondary antibody was diluted at 1:200 (room temperature, 45min) .

Note

For research use only.