

Product Name: Pim-2 Rabbit Polyclonal Antibody
Catalog #: APRab16152



Summary

Production Name	Pim-2 Rabbit Polyclonal Antibody
Description	Rabbit Polyclonal Antibody
Host	Rabbit
Application	IHC,ELISA
Reactivity	Human,Rat,Mouse

Performance

Conjugation	Unconjugated
Modification	Unmodified
Isotype	IgG
Clonality	Polyclonal
Form	Liquid
Storage	Store at 4°C short term. Aliquot and store at -20°C long term. Avoid freeze/thaw cycles.
Buffer	Liquid in PBS containing 50% glycerol, 0.5% BSA and 0.02% New type preservative N.
Purification	Affinity purification

Immunogen

Gene Name	PIM2
Alternative Names	PIM2; Serine/threonine-protein kinase pim-2; Pim-2h
Gene ID	11040.0
SwissProt ID	Q9P1W9.Synthesized peptide derived from the C-terminal region of human Pim-2.

Application

Dilution Ratio IHC 1:100-1:300 ELISA: 1:10000

Molecular Weight

Background

This gene encodes a protooncogene that acts as a serine/threonine protein kinase. Studies determined the encoded protein functions to prevent apoptosis and to promote cell survival.[provided by RefSeq, Nov 2009],catalytic activity:ATP +

Product Name: Pim-2 Rabbit Polyclonal Antibody
Catalog #: APRab16152

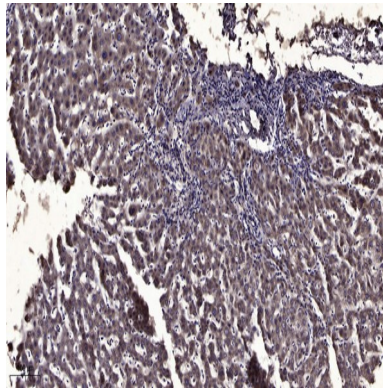


a protein = ADP + a phosphoprotein.,similarity:Belongs to the protein kinase superfamily.,similarity:Belongs to the protein kinase superfamily. CAMK Ser/Thr protein kinase family. PIM subfamily.,similarity:Contains 1 protein kinase domain.,tissue specificity:Highly expressed in hematopoietic tissues, in leukemic and lymphoma cell lines, testis, small intestine, colon and colorectal adenocarcinoma cells,

Research Area

Acute myeloid leukemia;

Image Data



Immunohistochemical analysis of paraffin-embedded human liver cancer. 1, Antibody was diluted at 1:200 (4° overnight) .
2, Tris-EDTA,pH9.0 was used for antigen retrieval. 3,Secondary antibody was diluted at 1:200 (room temperature, 45min) .

Note

For research use only.