
Summary

Production Name	PIG-X Rabbit Polyclonal Antibody
Description	Rabbit Polyclonal Antibody
Host	Rabbit
Application	WB,IHC,ELISA
Reactivity	Human,Rat,Mouse

Performance

Conjugation	Unconjugated
Modification	Unmodified
Isotype	IgG
Clonality	Polyclonal
Form	Liquid
Storage	Store at 4°C short term. Aliquot and store at -20°C long term. Avoid freeze/thaw cycles.
Buffer	Liquid in PBS containing 50% glycerol, 0.5% BSA and 0.02% New type preservative N.
Purification	Affinity purification

Immunogen

Gene Name	PIGX
Alternative Names	PIGX; Phosphatidylinositol-glycan biosynthesis class X protein; PIG-X
Gene ID	54965.0
SwissProt ID	Q8TBF5.The antiserum was produced against synthesized peptide derived from human PIGX. AA range:183-232

Application

Dilution Ratio	WB 1:500 - 1:2000. IHC 1:100 - 1:300. ELISA: 1:40000..
Molecular Weight	26kD

Background

Product Name: PIG-X Rabbit Polyclonal Antibody
Catalog #: APRab16144

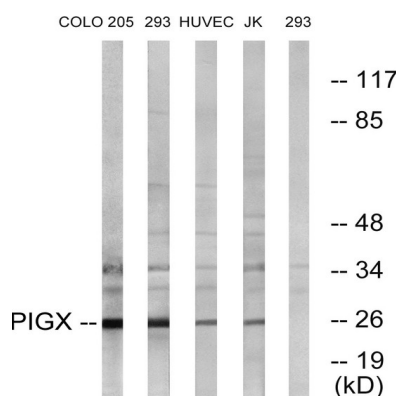


This gene encodes a type I transmembrane protein in the endoplasmic reticulum (ER). The protein is an essential component of glycosylphosphatidylinositol-mannosyltransferase I, which transfers the first of the four mannoses in the GPI-anchor precursors during GPI-anchor biosynthesis. Studies in rat indicate that the protein is translated from a non-AUG translation initiation site. Alternative splicing results in multiple transcript variants. [provided by RefSeq, Oct 2009],function:Essential component of glycosylphosphatidylinositol-mannosyltransferase 1 which transfers the first of the 4 mannoses in the GPI-anchor precursors during GPI-anchor biosynthesis. Probably acts by stabilizing the mannosyltransferase PIGM.,pathway:Glycolipid biosynthesis; glycosylphosphatidylinositol-anchor biosynthesis.,PTM:N-glycosylated.,sequence caution:Unusual initiator. The initiator methionine is coded by a non-canonical CTG leucine codon.,similarity:Belongs to the PIGX family.,subunit:Interacts with PIGM.,

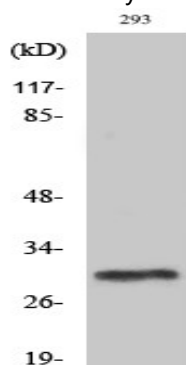
Research Area

Glycosylphosphatidylinositol(GPI)-anchor biosynthesis;

Image Data

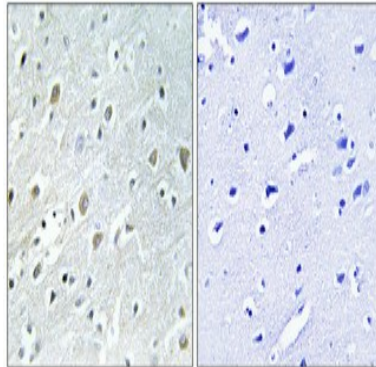


Western blot analysis of lysates from 293, COLO, HUVEC, and Jurkat cells, using PIGX Antibody. The lane on the right is blocked with the synthesized peptide.



Western Blot analysis of various cells using PIG-X Polyclonal Antibody diluted at 1: 1000

Product Name: PIG-X Rabbit Polyclonal Antibody
Catalog #: APRab16144



Immunohistochemical analysis of paraffin-embedded Human brain. Antibody was diluted at 1:100 (4°,overnight) . High-pressure and temperature Tris-EDTA,pH8.0 was used for antigen retrieval. Negative contrl (right) obtaned from antibody was pre-absorbed by immunogen peptide.

Note

For research use only.