
Summary

Production Name	PIASy Rabbit Polyclonal Antibody
Description	Rabbit Polyclonal Antibody
Host	Rabbit
Application	WB,IHC,ELISA
Reactivity	Human,Mouse

Performance

Conjugation	Unconjugated
Modification	Unmodified
Isotype	IgG
Clonality	Polyclonal
Form	Liquid
Storage	Store at 4°C short term. Aliquot and store at -20°C long term. Avoid freeze/thaw cycles.
Buffer	Liquid in PBS containing 50% glycerol, 0.5% BSA and 0.02% New type preservative N.
Purification	Affinity purification

Immunogen

Gene Name	PIAS4
Alternative Names	PIAS4; PIASG; E3 SUMO-protein ligase PIAS4; PIASy; Protein inhibitor of activated STAT protein 4; Protein inhibitor of activated STAT protein gamma; PIAS-gamma
Gene ID	51588.0
SwissProt ID	Q8N2W9.The antiserum was produced against synthesized peptide derived from human PIAS4. AA range:451-500

Application

Dilution Ratio	WB 1:500 - 1:2000. IHC 1:100 - 1:300. ELISA: 1:20000..
Molecular Weight	56kD

Background

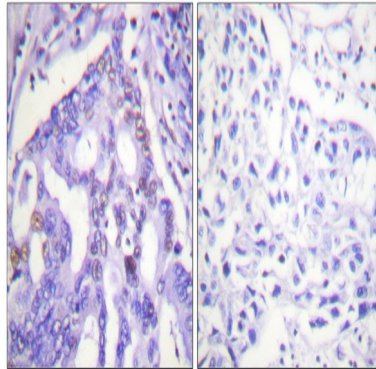
domain:The LXXLL motif is a coregulator signature that is essential for transcriptional corepression.,function:Functions as an E3-type small ubiquitin-like modifier (SUMO) ligase, stabilizing the interaction between UBE2I and the substrate, and as a SUMO-tethering factor. Plays a crucial role as a transcriptional coregulation in various cellular pathways, including the STAT pathway, the p53 pathway, the Wnt pathway and the steroid hormone signaling pathway. Involved in gene silencing. Promotes PARK7 sumoylation. In Wnt signaling, represses LEF1 and enhances TCF4 transcriptional activities through promoting their sumoylations.,pathway:Protein modification; protein sumoylation.,PTM:Sumoylated. Lys-35 is the main site of sumoylation. Sumoylation is required for TCF4 sumoylation and transcriptional activation. Represses LEF1 transcriptional activity. SUMO1 is the preferred conjugate.,similarity:Belongs to the PIAS family.,similarity:Contains 1 SAP domain.,similarity:Contains 1 SP-RING-type zinc finger.,subcellular location:Colocalizes with SUMO1 and TCF7L2/TCF4 and LEF1 in a subset of PML (promyelocytic leukemia) nuclear bodies.,subunit:Interacts with AR, GATA2, LEF1, TP53 and STAT1 (IFNG-induced). Binds to AT-rich DNA sequences, known as matrix or scaffold attachment regions (MARs/SARs) (By similarity). Interacts with TICAM1. Interacts with KLF8; the interaction results in SUMO ligation and repression of KLF8 transcriptional activity and of its cell cycle progression into G(1) phase.,tissue specificity:Highly expressed in testis and, at lower levels, in spleen, prostate, ovary, colon and peripheral blood leukocytes.,domain:The LXXLL motif is a coregulator signature that is essential for transcriptional corepression.,function:Functions as an E3-type small ubiquitin-like modifier (SUMO) ligase, stabilizing the interaction between UBE2I and the substrate, and as a SUMO-tethering factor. Plays a crucial role as a transcriptional coregulation in various cellular pathways, including the STAT pathway, the p53 pathway, the Wnt pathway and the steroid hormone signaling pathway. Involved in gene silencing. Promotes PARK7 sumoylation. In Wnt signaling, represses LEF1 and enhances TCF4 transcriptional activities through promoting their sumoylations.,pathway:Protein modification; protein sumoylation.,PTM:Sumoylated. Lys-35 is the main site of sumoylation. Sumoylation is required for TCF4 sumoylation and transcriptional activation. Represses LEF1 transcriptional activity. SUMO1 is the preferred conjugate.,similarity:Belongs to the PIAS family.,similarity:Contains 1 SAP domain.,similarity:Contains 1 SP-RING-type zinc finger.,subcellular location:Colocalizes with SUMO1 and TCF7L2/TCF4 and LEF1 in a subset of PML (promyelocytic leukemia) nuclear bodies.,subunit:Interacts with AR, GATA2, LEF1, TP53 and STAT1 (IFNG-induced). Binds to AT-rich DNA sequences, known as matrix or scaffold attachment regions (MARs/SARs) (By similarity). Interacts with TICAM1. Interacts with KLF8; the interaction results in SUMO ligation and repression of KLF8 transcriptional activity and of its cell cycle progression into G(1) phase.,tissue specificity:Highly expressed in testis and, at lower levels, in spleen, prostate, ovary, colon and peripheral blood leukocytes.,

Research Area

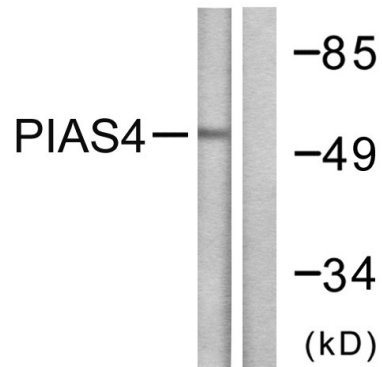
Ubiquitin mediated proteolysis;Jak_STAT;Pathways in cancer;Small cell lung cancer;

Image Data

Product Name: PIASy Rabbit Polyclonal Antibody
Catalog #: APRab16122



Immunohistochemistry analysis of paraffin-embedded human lung carcinoma tissue, using PIAS4 Antibody. The picture on the right is blocked with the synthesized peptide.



Western blot analysis of lysates from Jurkat cells, using PIAS4 Antibody. The lane on the right is blocked with the synthesized peptide.

Note

For research use only.