

**Product Name: Photomedin-2 Rabbit Polyclonal Antibody**  
**Catalog #: APRab16084**

---

## Summary

<b>Production Name</b>	Photomedin-2 Rabbit Polyclonal Antibody
<b>Description</b>	Rabbit Polyclonal Antibody
<b>Host</b>	Rabbit
<b>Application</b>	WB,ELISA
<b>Reactivity</b>	Human,Mouse

## Performance

<b>Conjugation</b>	Unconjugated
<b>Modification</b>	Unmodified
<b>Isotype</b>	IgG
<b>Clonality</b>	Polyclonal
<b>Form</b>	Liquid
<b>Storage</b>	Store at 4°C short term. Aliquot and store at -20°C long term. Avoid freeze/thaw cycles.
<b>Buffer</b>	Liquid in PBS containing 50% glycerol, 0.5% BSA and 0.02% New type preservative N.
<b>Purification</b>	Affinity purification

## Immunogen

<b>Gene Name</b>	OLFML2B
<b>Alternative Names</b>	OLFML2B; Olfactomedin-like protein 2B; Photomedin-2
<b>Gene ID</b>	25903.0
<b>SwissProt ID</b>	Q68BL8.The antiserum was produced against synthesized peptide derived from human OLFML2B. AA range:171-220

## Application

<b>Dilution Ratio</b>	WB 1:500 - 1:2000. ELISA: 1:10000
<b>Molecular Weight</b>	84kD

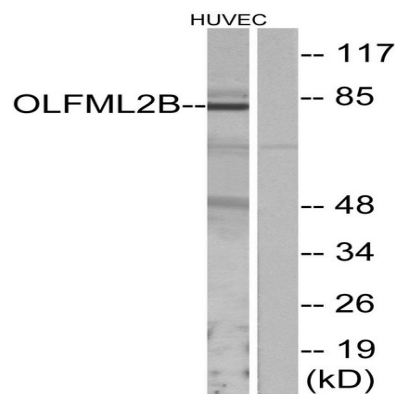
**Product Name: Photomedin-2 Rabbit Polyclonal Antibody**  
**Catalog #: APRab16084**

## Background

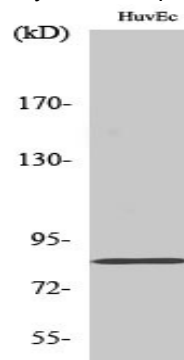
PTM:O-glycosylated and N-glycosylated.,similarity:Contains 1 olfactomedin-like domain.,subunit:Homodimer. Binds to heparin and chondroitin sulfate E.,PTM:O-glycosylated and N-glycosylated.,similarity:Contains 1 olfactomedin-like domain.,subunit:Homodimer. Binds to heparin and chondroitin sulfate E.,

## Research Area

## Image Data



Western blot analysis of lysates from HUVEC cells, using OLFML2B Antibody. The lane on the right is blocked with the synthesized peptide.



Western Blot analysis of various cells using Photomedin-2 Polyclonal Antibody

## Note

For research use only.