

Product Name: Photomedin-1 Rabbit Polyclonal Antibody
Catalog #: APRab16083

Summary

Production Name	Photomedin-1 Rabbit Polyclonal Antibody
Description	Rabbit Polyclonal Antibody
Host	Rabbit
Application	IF, WB,
Reactivity	Human, Rat, Mouse

Performance

Conjugation	Unconjugated
Modification	Unmodified
Isotype	IgG
Clonality	Polyclonal
Form	Liquid
Storage	Store at 4°C short term. Aliquot and store at -20°C long term. Avoid freeze/thaw cycles.
Buffer	Liquid in PBS containing 50% glycerol, 0.5% BSA and 0.02% New type preservative N.
Purification	Affinity purification

Immunogen

Gene Name	OLFML2A
Alternative Names	OLFML2A; Olfactomedin-like protein 2A; Photomedin-1
Gene ID	169611.0
SwissProt ID	Q68BL7. The antiserum was produced against synthesized peptide derived from human OLFML2A. AA range:311-360

Application

Dilution Ratio	WB 1:500 - 1:2000. IF 1:200 - 1:1000.
Molecular Weight	73kD

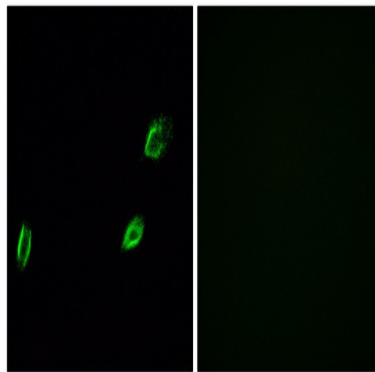
Product Name: Photomedin-1 Rabbit Polyclonal Antibody
Catalog #: APRab16083

Background

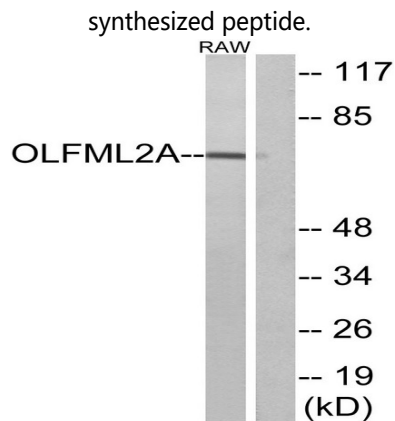
PTM:May be cleaved at Lys-295 after secretion.,PTM:O-glycosylated but not N-glycosylated.,similarity:Contains 1 olfactomedin-like domain.,subunit:Homodimer. Binds to heparin and chondroitin sulfate E.,PTM:May be cleaved at Lys-295 after secretion.,PTM:O-glycosylated but not N-glycosylated.,similarity:Contains 1 olfactomedin-like domain.,subunit:Homodimer. Binds to heparin and chondroitin sulfate E.,

Research Area

Image Data

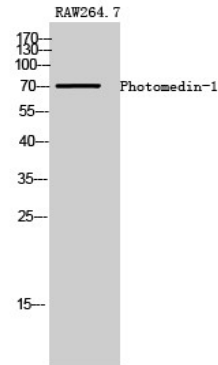


Immunofluorescence analysis of A549 cells, using OLFML2A Antibody. The picture on the right is blocked with the synthesized peptide.



Western blot analysis of lysates from RAW264.7 cells, using OLFML2A Antibody. The lane on the right is blocked with the synthesized peptide.

Product Name: Photomedin-1 Rabbit Polyclonal Antibody
Catalog #: APRab16083



Western Blot analysis of RAW264.7 cells using Photomedin-1 Polyclonal Antibody

Note

For research use only.