

Product Name: PHI-1 Rabbit Polyclonal Antibody
Catalog #: APRab16071



Summary

Production Name	PHI-1 Rabbit Polyclonal Antibody
Description	Rabbit Polyclonal Antibody
Host	Rabbit
Application	IHC,ELISA
Reactivity	Human,Mouse,Rat

Performance

Conjugation	Unconjugated
Modification	Unmodified
Isotype	IgG
Clonality	Polyclonal
Form	Liquid
Storage	Store at 4°C short term. Aliquot and store at -20°C long term. Avoid freeze/thaw cycles.
Buffer	Liquid in PBS containing 50% glycerol, 0.5% BSA and 0.02% New type preservative N.
Purification	Affinity purification

Immunogen

Gene Name	PPP1R14B
Alternative Names	PPP1R14B; PLCB3N; PNG; Protein phosphatase 1 regulatory subunit 14B; Phospholipase C-beta-3 neighbouring gene protein
Gene ID	26472.0
SwissProt ID	Q96C90.Synthesized peptide derived from PHI-1 . at AA range: 50-130

Application

Dilution Ratio	IHC 1:100-1:300 ELISA: 1:20000
Molecular Weight	

Background

function:Inhibitor of PPP1CA. Has over 50-fold higher inhibitory activity when phosphorylated.,PTM:Phosphorylated

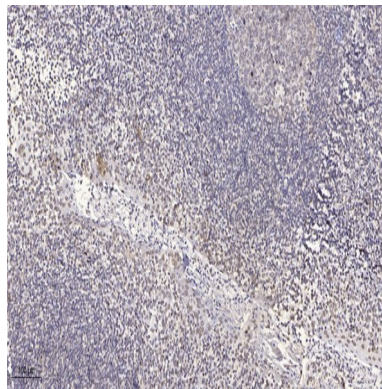
Product Name: PHI-1 Rabbit Polyclonal Antibody
Catalog #: APRab16071



primarily on Thr-57 by PKC (in vitro). An unknown Ser is also phosphorylated by PKC (in vitro),,similarity:Belongs to the PP1 inhibitor family.,tissue specificity:Ubiquitous. Expressed at low levels.,function:Inhibitor of PPP1CA. Has over 50-fold higher inhibitory activity when phosphorylated.,PTM:Phosphorylated primarily on Thr-57 by PKC (in vitro). An unknown Ser is also phosphorylated by PKC (in vitro),,similarity:Belongs to the PP1 inhibitor family.,tissue specificity:Ubiquitous. Expressed at low levels.,

Research Area

Image Data



Immunohistochemical analysis of paraffin-embedded human tonsil. 1, Antibody was diluted at 1:200 (4° overnight) . 2, Tris-EDTA,pH9.0 was used for antigen retrieval. 3,Secondary antibody was diluted at 1:200 (room temperature, 30min) .

Note

For research use only.