

---

## Summary

<b>Production Name</b>	PHF3 Rabbit Polyclonal Antibody
<b>Description</b>	Rabbit Polyclonal Antibody
<b>Host</b>	Rabbit
<b>Application</b>	WB,IHC,ELISA
<b>Reactivity</b>	Human,Mouse

## Performance

<b>Conjugation</b>	Unconjugated
<b>Modification</b>	Unmodified
<b>Isotype</b>	IgG
<b>Clonality</b>	Polyclonal
<b>Form</b>	Liquid
<b>Storage</b>	Store at 4°C short term. Aliquot and store at -20°C long term. Avoid freeze/thaw cycles.
<b>Buffer</b>	Liquid in PBS containing 50% glycerol, 0.5% BSA and 0.02% New type preservative N.
<b>Purification</b>	Affinity purification

## Immunogen

<b>Gene Name</b>	PHF3
<b>Alternative Names</b>	PHF3; KIAA0244; PHD finger protein 3
<b>Gene ID</b>	23469.0
<b>SwissProt ID</b>	Q92576.The antiserum was produced against synthesized peptide derived from human PHF3. AA range:1990-2039

## Application

<b>Dilution Ratio</b>	WB 1:500 - 1:2000. IHC 1:100 - 1:300. ELISA: 1:40000..
<b>Molecular Weight</b>	230kD

## Background

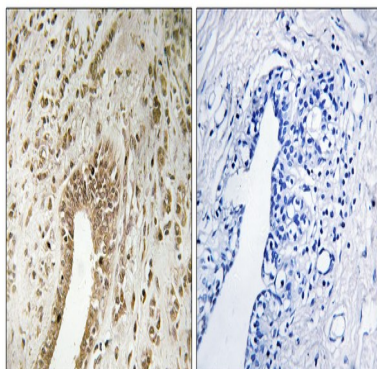
**Product Name: PHF3 Rabbit Polyclonal Antibody**  
**Catalog #: APRab16066**



This gene encodes a member of a PHD finger-containing gene family. This gene may function as a transcription factor and may be involved in glioblastomas development. Alternative splicing results in multiple transcript variants. [provided by RefSeq, Mar 2014],PTM:Phosphorylated upon DNA damage, probably by ATM or ATR.,similarity:Contains 1 PHD-type zinc finger.,similarity:Contains 1 TFIS central domain.,tissue specificity:Ubiquitous. Expression is significantly reduced or lost in glioblastomas, glioblastoma cell lines, anaplastic astrocytomas, and astrocytomas.,

## Research Area

## Image Data



Immunohistochemistry analysis of paraffin-embedded human breast carcinoma tissue, using PHF3 Antibody. The picture on the right is blocked with the synthesized peptide.



Western Blot analysis of various cells using PHF3 Polyclonal Antibody cells nucleus extracted by Minute TM Cytoplasmic and Nuclear Fractionation kit (SC-003, Inventbiotech, MN, USA) .

## Note

For research use only.