

Summary

Production Name	PHAPI2 Rabbit Polyclonal Antibody
Description	Rabbit Polyclonal Antibody
Host	Rabbit
Application	WB,ELISA
Reactivity	Human,Mouse,Rat

Performance

Conjugation	Unconjugated
Modification	Unmodified
Isotype	IgG
Clonality	Polyclonal
Form	Liquid
Storage	Store at 4°C short term. Aliquot and store at -20°C long term. Avoid freeze/thaw cycles.
Buffer	Liquid in PBS containing 50% glycerol, 0.5% BSA and 0.02% New type preservative N.
Purification	Affinity purification

Immunogen

Gene Name	ANP32B ANP32B; APRIL; PHAPI2; Acidic leucine-rich nuclear phosphoprotein 32 family member
Alternative Names	B; Acidic protein rich in leucines; Putative HLA-DR-associated protein I-2; PHAPI2; Silver-stainable protein SSP29
Gene ID	10541.0
SwissProt ID	Q92688.The antiserum was produced against synthesized peptide derived from human ANP32B. AA range:1-50

Application

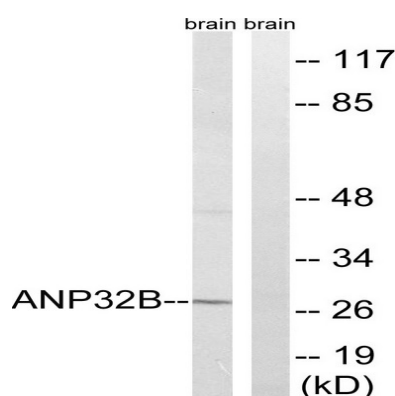
Dilution Ratio	WB 1:500-2000; ELISA 2000-20000
Molecular Weight	29kD

Background

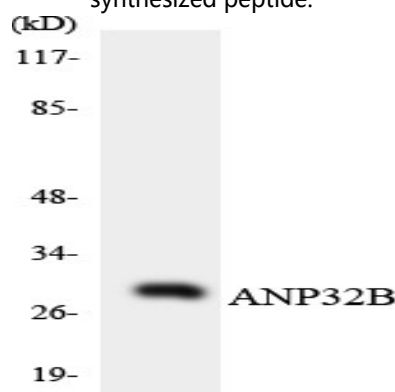
function: Multifunctional protein working as a cell cycle progression factor as well as a cell survival factor. Required for the progression from the G1 to the S phase. Anti-apoptotic protein which functions as a caspase-3 inhibitor. Has no phosphatase 2A (PP2A) inhibitor activity., similarity: Belongs to the ANP32 family., similarity: Contains 4 LRR (leucine-rich) repeats., subcellular location: Accumulates in the nuclei at the S phase., tissue specificity: Expressed in heart, lung, pancreas, prostate and in spleen, thymus and placenta., function: Multifunctional protein working as a cell cycle progression factor as well as a cell survival factor. Required for the progression from the G1 to the S phase. Anti-apoptotic protein which functions as a caspase-3 inhibitor. Has no phosphatase 2A (PP2A) inhibitor activity., similarity: Belongs to the ANP32 family., similarity: Contains 4 LRR (leucine-rich) repeats., subcellular location: Accumulates in the nuclei at the S phase., tissue specificity: Expressed in heart, lung, pancreas, prostate and in spleen, thymus and placenta.,

Research Area

Image Data

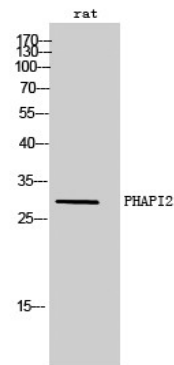


Western blot analysis of lysates from rat brain cells, using ANP32B Antibody. The lane on the right is blocked with the synthesized peptide.



Western blot analysis of the lysates from HeLa cells using ANP32B antibody.

Product Name: PHAPI2 Rabbit Polyclonal Antibody
Catalog #: APRab16055



Western Blot analysis of rat cells using PHAPI2 Polyclonal Antibody cells nucleus extracted by Minute TM Cytoplasmic and Nuclear Fractionation kit (SC-003, Inventbiotech, MN, USA) .

Note

For research use only.