

Summary

Production Name	PGRMC2 Rabbit Polyclonal Antibody
Description	Rabbit Polyclonal Antibody
Host	Rabbit
Application	WB
Reactivity	Human,Mouse,Rat

Performance

Conjugation	Unconjugated
Modification	Unmodified
Isotype	IgG
Clonality	Polyclonal
Form	Liquid
Storage	Store at 4°C short term. Aliquot and store at -20°C long term. Avoid freeze/thaw cycles.
Buffer	Liquid in PBS containing 50% glycerol, 0.5% BSA and 0.02% New type preservative N.
Purification	Affinity purification

Immunogen

Gene Name	PGRMC2
Alternative Names	PGRMC2; DG6; PMBP; Membrane-associated progesterone receptor component 2; Progesterone membrane-binding protein; Steroid receptor protein DG6
Gene ID	10424.0
SwissProt ID	O15173.The antiserum was produced against synthesized peptide derived from human PGRMC2. AA range:174-223

Application

Dilution Ratio	WB 1:500-2000 ELISA 2000-20000
Molecular Weight	25kD

Background

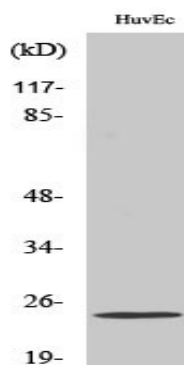
Product Name: PGRMC2 Rabbit Polyclonal Antibody
Catalog #: APRab16047



domain:The cytochrome b5 heme-binding domain lacks the conserved iron-binding His residues at positions 137 and 161.,function:Receptor for steroids .,similarity:Belongs to the cytochrome b5 family. MAPR subfamily.,similarity:Contains 1 cytochrome b5 heme-binding domain.,domain:The cytochrome b5 heme-binding domain lacks the conserved iron-binding His residues at positions 137 and 161.,function:Receptor for steroids .,similarity:Belongs to the cytochrome b5 family. MAPR subfamily.,similarity:Contains 1 cytochrome b5 heme-binding domain.,

Research Area

Image Data



Western Blot analysis of various cells using PGRMC2 Polyclonal Antibody diluted at 1 : 1000

Note

For research use only.