

Product Name: PGI2 synthase Rabbit Polyclonal Antibody
Catalog #: APRab16032

Summary

Production Name	PGI2 synthase Rabbit Polyclonal Antibody
Description	Rabbit Polyclonal Antibody
Host	Rabbit
Application	WB,ELISA
Reactivity	Human,Mouse,Rat

Performance

Conjugation	Unconjugated
Modification	Unmodified
Isotype	IgG
Clonality	Polyclonal
Form	Liquid
Storage	Store at 4°C short term. Aliquot and store at -20°C long term. Avoid freeze/thaw cycles.
Buffer	Liquid in PBS containing 50% glycerol, 0.5% BSA and 0.02% New type preservative N.
Purification	Affinity purification

Immunogen

Gene Name	PTGIS
Alternative Names	PTGIS; CYP8; CYP8A1; Prostacyclin synthase; Prostaglandin I2 synthase
Gene ID	5740.0
SwissProt ID	Q16647.Synthesized peptide derived from the C-terminal region of human PGI2 synthase.

Application

Dilution Ratio	IHC 1:50-300; ELISA 2000-20000
Molecular Weight	57kD

Background

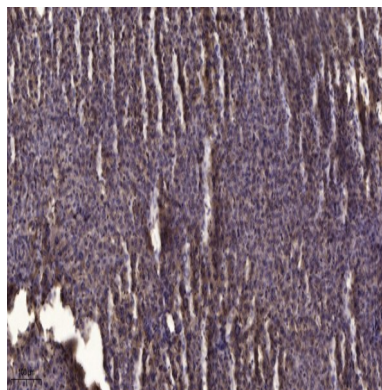
Product Name: PGI2 synthase Rabbit Polyclonal Antibody
Catalog #: APRab16032

This gene encodes a member of the cytochrome P450 superfamily of enzymes. The cytochrome P450 proteins are monooxygenases which catalyze many reactions involved in drug metabolism and synthesis of cholesterol, steroids and other lipids. However, this protein is considered a member of the cytochrome P450 superfamily on the basis of sequence similarity rather than functional similarity. This endoplasmic reticulum membrane protein catalyzes the conversion of prostglandin H2 to prostacyclin (prostaglandin I2), a potent vasodilator and inhibitor of platelet aggregation. An imbalance of prostacyclin and its physiological antagonist thromboxane A2 contribute to the development of myocardial infarction, stroke, and atherosclerosis. [provided by RefSeq, Jul 2008],catalytic activity:(5Z,13E)-(15S)-9-alpha,11-alpha-epidioxy-15-hydroxyprosta-5,13-dienoate = (5Z,13E)-(15S)-6,9-alpha-epoxy-11-alpha,15-dihydroxyprosta-5,13-dienoate.,cofactor:Heme group.,function:Catalyzes the isomerization of prostaglandin H2 to prostacyclin (= prostaglandin I2).,online information:CYP8A1 alleles,similarity:Belongs to the cytochrome P450 family.,tissue specificity:Widely expressed; particularly abundant in ovary, heart, skeletal muscle, lung and prostate.,

Research Area

Arachidonic acid metabolism;

Image Data



Immunohistochemical analysis of paraffin-embedded human liver cancer. 1, Antibody was diluted at 1:200 (4° overnight) .
2, Tris-EDTA,pH9.0 was used for antigen retrieval. 3,Secondary antibody was diluted at 1:200 (room temperature, 45min) .

Note

For research use only.