

## Summary

<b>Production Name</b>	PGBD1 Rabbit Polyclonal Antibody
<b>Description</b>	Rabbit Polyclonal Antibody
<b>Host</b>	Rabbit
<b>Application</b>	WB,ELISA
<b>Reactivity</b>	Human,Rat,Mouse

## Performance

<b>Conjugation</b>	Unconjugated
<b>Modification</b>	Unmodified
<b>Isotype</b>	IgG
<b>Clonality</b>	Polyclonal
<b>Form</b>	Liquid
<b>Storage</b>	Store at 4°C short term. Aliquot and store at -20°C long term. Avoid freeze/thaw cycles.
<b>Buffer</b>	Liquid in PBS containing 50% glycerol, 0.5% BSA and 0.02% New type preservative N.
<b>Purification</b>	Affinity purification

## Immunogen

<b>Gene Name</b>	PGBD1
<b>Alternative Names</b>	PGBD1; hucep-4; PiggyBac transposable element-derived protein 1; Cerebral protein 4
<b>Gene ID</b>	84547.0
<b>SwissProt ID</b>	Q96JS3.The antiserum was produced against synthesized peptide derived from human PGBD1. AA range:241-290

## Application

<b>Dilution Ratio</b>	WB 1:500 - 1:2000. ELISA: 1:20000
<b>Molecular Weight</b>	92kD

## Background

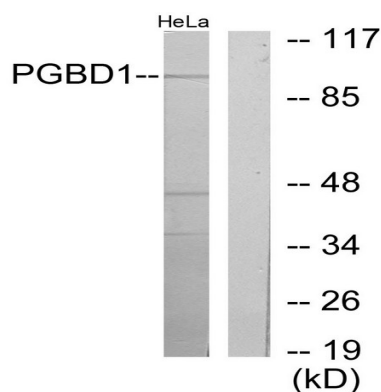
**Product Name: PGBD1 Rabbit Polyclonal Antibody**  
**Catalog #: APRab16022**



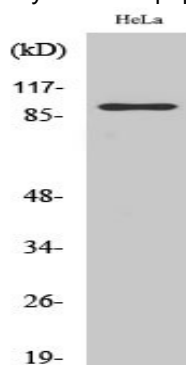
The piggyBac family of proteins, found in diverse animals, are transposases related to the transposase of the canonical piggyBac transposon from the moth, *Trichoplusia ni*. This family also includes genes in several genomes, including human, that appear to have been derived from the piggyBac transposons. This gene belongs to the subfamily of piggyBac transposable element derived (PGBD) genes. The PGBD proteins appear to be novel, with no obvious relationship to other transposases, or other known protein families. This gene product is specifically expressed in the brain, however, its exact function is not known. Alternative splicing results in multiple transcript variants encoding the same protein.[provided by RefSeq, May 2010],similarity:Contains 1 SCAN box domain.,

## Research Area

## Image Data



Western blot analysis of lysates from HeLa cells, using PGBD1 Antibody. The lane on the right is blocked with the synthesized peptide.



Western Blot analysis of various cells using PGBD1 Polyclonal Antibody cells nucleus extracted by Minute TM Cytoplasmic and Nuclear Fractionation kit (SC-003, Inventbiotech, MN, USA) .

## Note

For research use only.

**Product Name: PGBD1 Rabbit Polyclonal Antibody**  
**Catalog #: APRab16022**

---

