

Summary

Production Name	PFK-C Rabbit Polyclonal Antibody
Description	Rabbit Polyclonal Antibody
Host	Rabbit
Application	WB,IHC
Reactivity	Human,Mouse,Rat,Monkey

Performance

Conjugation	Unconjugated
Modification	Unmodified
Isotype	IgG
Clonality	Polyclonal
Form	Liquid
Storage	Store at 4°C short term. Aliquot and store at -20°C long term. Avoid freeze/thaw cycles.
Buffer	Liquid in PBS containing 50% glycerol, 0.5% BSA and 0.02% New type preservative N.
Purification	Affinity purification

Immunogen

Gene Name	PFKP PFKP; PFKF; 6-phosphofructokinase type C; 6-phosphofructokinase; platelet type;
Alternative Names	Phosphofructo-1-kinase isozyme C; PFK-C; Phosphofructokinase 1; Phosphohexokinase
Gene ID	5214.0
SwissProt ID	Q01813.The antiserum was produced against synthesized peptide derived from human K6PP. AA range:341-390

Application

Dilution Ratio	WB 1:500 - 1:2000. IHC 1:100 - 1:300. ELISA: 1:5000. Not yet tested in other applications.
-----------------------	--

Product Name: PFK-C Rabbit Polyclonal Antibody
Catalog #: APRab16016



Molecular Weight 84kD

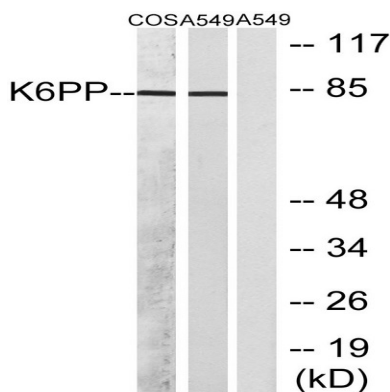
Background

This gene encodes a member of the phosphofructokinase A protein family. The encoded enzyme is the platelet-specific isoform of phosphofructokinase and plays a key role in glycolysis regulation. This gene may play a role in metabolic reprogramming in some cancers, including clear cell renal cell carcinomas, and cancer of the bladder, breast, and lung. Alternative splicing results in multiple transcript variants. [provided by RefSeq, Sep 2016],catalytic activity:ATP + D-fructose 6-phosphate = ADP + D-fructose 1,6-bisphosphate.,cofactor:Magnesium.,enzyme regulation:Allosteric enzyme activated by ADP, AMP, or fructose bisphosphate and inhibited by ATP or citrate.,miscellaneous:In human PFK exists as a system of 3 types of subunits, PFKM (muscle), PFKL (liver) and PFKP (platelet) isoenzymes.,pathway:Carbohydrate degradation; glycolysis; D-glyceraldehyde 3-phosphate and glycerone phosphate from D-glucose: step 3/4.,similarity:Belongs to the phosphofructokinase family. Two domains subfamily.,subunit:Tetramer. Muscle is M4, liver is L4, and red cell is M3L, M2L2, or ML3. A subunit composition with a higher proportion of platelet type subunits is found in platelets, brain and fibroblasts.,

Research Area

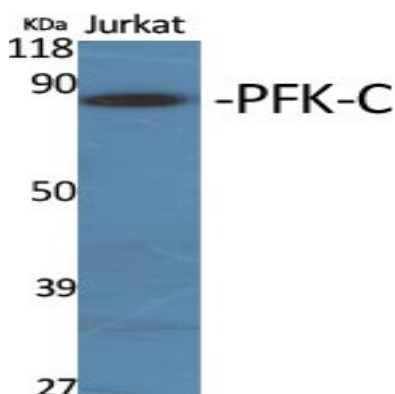
Glycolysis / Gluconeogenesis;Pentose phosphate pathway;Fructose and mannose metabolism;Galactose metabolism;

Image Data

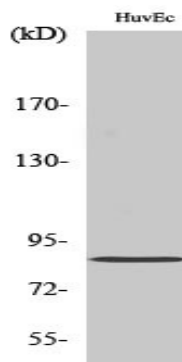


Western blot analysis of lysates from A549 and COS7 cells, using K6PP Antibody. The lane on the right is blocked with the synthesized peptide.

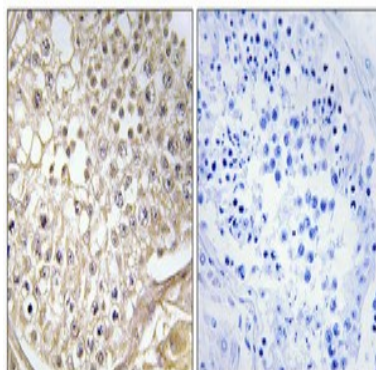
Product Name: PFK-C Rabbit Polyclonal Antibody
Catalog #: APRab16016



Western Blot analysis of various cells using PFK-C Polyclonal Antibody



Western Blot analysis of HuvEc cells using PFK-C Polyclonal Antibody



Immunohistochemical analysis of paraffin-embedded Human testis. Antibody was diluted at 1:100 (4°, overnight) . High-pressure and temperature Tris-EDTA, pH8.0 was used for antigen retrieval. Negative control (right) obtained from antibody was pre-absorbed by immunogen peptide.

Note

For research use only.