
Summary

Production Name	Peropsin Rabbit Polyclonal Antibody
Description	Rabbit Polyclonal Antibody
Host	Rabbit
Application	WB,ELISA
Reactivity	Human,Rat,Mouse

Performance

Conjugation	Unconjugated
Modification	Unmodified
Isotype	IgG
Clonality	Polyclonal
Form	Liquid
Storage	Store at 4°C short term. Aliquot and store at -20°C long term. Avoid freeze/thaw cycles.
Buffer	Liquid in PBS containing 50% glycerol, 0.5% BSA and 0.02% New type preservative N.
Purification	Affinity purification

Immunogen

Gene Name	RRH
Alternative Names	RRH; Visual pigment-like receptor peropsin
Gene ID	10692.0
SwissProt ID	O14718.The antiserum was produced against synthesized peptide derived from human RRH. AA range:201-250

Application

Dilution Ratio	WB 1:500 - 1:2000. ELISA: 1:10000
Molecular Weight	37kD

Background

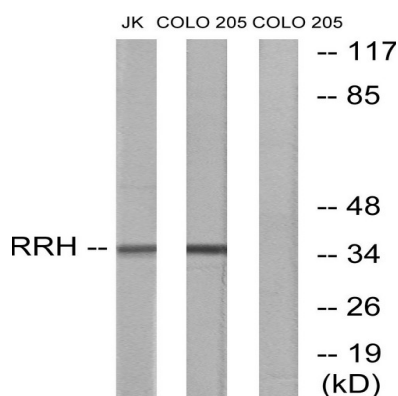
Product Name: Peropsin Rabbit Polyclonal Antibody
Catalog #: APRab15979



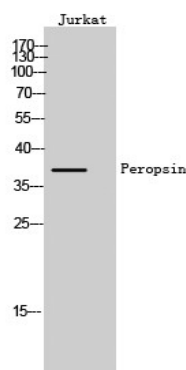
Opsins are members of the guanine nucleotide-binding protein (G protein)-coupled receptor superfamily. This gene belongs to the seven-exon subfamily of mammalian opsin genes that includes opsin 5 and retinal G protein coupled receptor. [provided by RefSeq, Jul 2008],function:May play a role in rpe physiology either by detecting light directly or by monitoring the concentration of retinoids or other photoreceptor-derived compounds.,similarity:Belongs to the G-protein coupled receptor 1 family. Opsin subfamily.,tissue specificity:Found only in the eye, where it is localized to the retinal pigment epithelium (RPE). In the RPE, it is localized to the microvilli that surround the photoreceptor outer segments.,

Research Area

Image Data



Western blot analysis of lysates from Jurkat and COLO cells, using RRH Antibody. The lane on the right is blocked with the synthesized peptide.



Western Blot analysis of Jurkat cells using Peropsin Polyclonal Antibody

Note

For research use only.