

**Product Name: PEPT1 Rabbit Polyclonal Antibody**  
**Catalog #: APRab15966**



---

## Summary

<b>Production Name</b>	PEPT1 Rabbit Polyclonal Antibody
<b>Description</b>	Rabbit Polyclonal Antibody
<b>Host</b>	Rabbit
<b>Application</b>	WB,ELISA
<b>Reactivity</b>	Human,Mouse,Rat

## Performance

<b>Conjugation</b>	Unconjugated
<b>Modification</b>	Unmodified
<b>Isotype</b>	IgG
<b>Clonality</b>	Polyclonal
<b>Form</b>	Liquid
<b>Storage</b>	Store at 4°C short term. Aliquot and store at -20°C long term. Avoid freeze/thaw cycles.
<b>Buffer</b>	Liquid in PBS containing 50% glycerol, 0.5% BSA and 0.02% New type preservative N.
<b>Purification</b>	Affinity purification

## Immunogen

<b>Gene Name</b>	SLC15A1
<b>Alternative Names</b>	SLC15A1; PEPT1; Solute carrier family 15 member 1; Intestinal H(+)/peptide cotransporter; Oligopeptide transporter; small intestine isoform; Peptide transporter 1
<b>Gene ID</b>	6564.0
<b>SwissProt ID</b>	P46059.The antiserum was produced against synthesized peptide derived from human SLC15A1. AA range:225-274

## Application

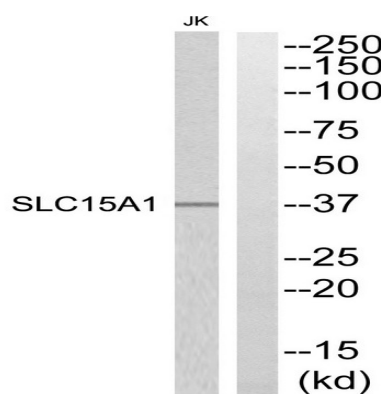
<b>Dilution Ratio</b>	WB 1:500-2000; ELISA 2000-20000
<b>Molecular Weight</b>	73kD

## Background

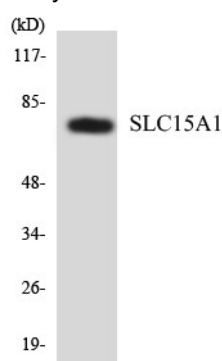
This gene encodes an intestinal hydrogen peptide cotransporter that is a member of the solute carrier family 15. The encoded protein is localized to the brush border membrane of the intestinal epithelium and mediates the uptake of di- and tripeptides from the lumen into the enterocytes. This protein plays an important role in the uptake and digestion of dietary proteins. This protein also facilitates the absorption of numerous peptidomimetic drugs. [provided by RefSeq, Apr 2010],function:Proton-coupled intake of oligopeptides of 2 to 4 amino acids with a preference for dipeptides. May constitute a major route for the absorption of protein digestion end-products.,similarity:Belongs to the PTR2/POT transporter (TC 2.A.17) family.,

## Research Area

## Image Data

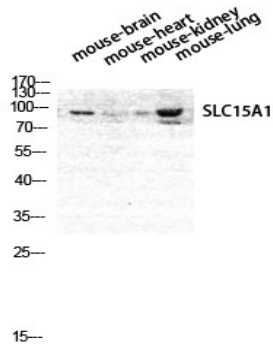


Western blot analysis of SLC15A1 Antibody. The lane on the right is blocked with the SLC15A1 peptide.



Western blot analysis of the lysates from HeLa cells using SLC15A1 antibody.

**Product Name: PEPT1 Rabbit Polyclonal Antibody**  
**Catalog #: APRab15966**



Western Blot analysis of MOUSE-BRAIN MOUSE-HEART MOUSE-LUNG MOUSE-KIDNEY cells using PEPT1 Polyclonal Antibody diluted at 1: 1000

**Note**

For research use only.