

Summary

Production Name	PEDF Rabbit Polyclonal Antibody
Description	Rabbit Polyclonal Antibody
Host	Rabbit
Application	IHC,ELISA
Reactivity	Human,Mouse,Rat

Performance

Conjugation	Unconjugated
Modification	Unmodified
Isotype	IgG
Clonality	Polyclonal
Form	Liquid
Storage	Store at 4°C short term. Aliquot and store at -20°C long term. Avoid freeze/thaw cycles.
Buffer	Liquid in PBS containing 50% glycerol, 0.5% BSA and 0.02% New type preservative N.
Purification	Affinity purification

Immunogen

Gene Name	SERPINF1
Alternative Names	SERPINF1; PEDF; PIG35; Pigment epithelium-derived factor; PEDF; Cell proliferation-inducing gene 35 protein; EPC-1; Serpin F1
Gene ID	5176.0
SwissProt ID	P36955.The antiserum was produced against synthesized peptide derived from human PEDF. AA range:258-307

Application

Dilution Ratio	IHC 1:100-1:300 ELISA: 1:20000
Molecular Weight	46kD

Background

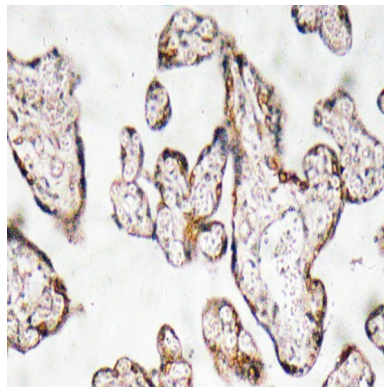
Product Name: PEDF Rabbit Polyclonal Antibody
Catalog #: APRab15953



This gene encodes a member of the serpin family that does not display the serine protease inhibitory activity shown by many of the other serpin proteins. The encoded protein is secreted and strongly inhibits angiogenesis. In addition, this protein is a neurotrophic factor involved in neuronal differentiation in retinoblastoma cells. Mutations in this gene were found in individuals with osteogenesis imperfecta, type VI. [provided by RefSeq, Aug 2016],developmental stage:Expressed in quiescent cells.,domain:The N-terminal (AA 44-121) exhibits neurite outgrowth-inducing activity. The C-terminal exposed loop (AA 382-418) is essential for serpin activity.,function:Neurotrophic protein; induces extensive neuronal differentiation in retinoblastoma cells. Potent inhibitor of angiogenesis. As it does not undergo the S (stressed) to R (relaxed) conformational transition characteristic of active serpins, it exhibits no serine protease inhibitory activity.,PTM:The N-terminus is blocked. Extracellular phosphorylation enhances antiangiogenic activity.,similarity:Belongs to the serpin family.,subcellular location:Enriched in stage I melanosomes.,tissue specificity:Retinal pigment epithelial cells and blood plasma.,

Research Area

Image Data



Immunohistochemistry analysis of PEDF antibody in paraffin-embedded human prostate carcinoma tissue.

Note

For research use only.