

Summary

| | |
|------------------------|---------------------------------|
| Production Name | PEA3 Rabbit Polyclonal Antibody |
| Description | Rabbit Polyclonal Antibody |
| Host | Rabbit |
| Application | IHC,ELISA |
| Reactivity | Human,Mouse |

Performance

| | |
|---------------------|--|
| Conjugation | Unconjugated |
| Modification | Unmodified |
| Isotype | IgG |
| Clonality | Polyclonal |
| Form | Liquid |
| Storage | Store at 4°C short term. Aliquot and store at -20°C long term. Avoid freeze/thaw cycles. |
| Buffer | Liquid in PBS containing 50% glycerol, 0.5% BSA and 0.02% New type preservative N. |
| Purification | Affinity purification |

Immunogen

| | |
|--------------------------|--|
| Gene Name | ETV4 |
| Alternative Names | ETV4; E1AF; PEA3; ETS translocation variant 4; Adenovirus E1A enhancer-binding protein; E1A-F; Polyomavirus enhancer activator 3 homolog; Protein PEA3 |
| Gene ID | 2118.0 |
| SwissProt ID | P43268.The antiserum was produced against synthesized peptide derived from human ETV4. AA range:281-330 |

Application

| | |
|-------------------------|--------------------------------|
| Dilution Ratio | IHC 1:100-1:300 ELISA: 1:20000 |
| Molecular Weight | |

Background

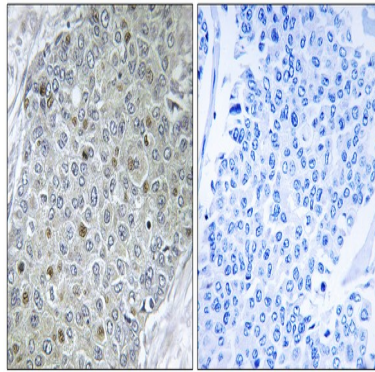
Product Name: PEA3 Rabbit Polyclonal Antibody
Catalog #: APRab15946



function:Transcriptional activator that binds to the enhancer of the adenovirus E1A gene; the core-binding sequence is 5'[AC]GGA[AT]GT-3',similarity:Belongs to the ETS family.,similarity:Contains 1 ETS DNA-binding domain.,function:Transcriptional activator that binds to the enhancer of the adenovirus E1A gene; the core-binding sequence is 5'[AC]GGA[AT]GT-3',similarity:Belongs to the ETS family.,similarity:Contains 1 ETS DNA-binding domain.,

Research Area

Image Data



Immunohistochemistry analysis of paraffin-embedded human breast carcinoma tissue, using ETV4 Antibody. The picture on the right is blocked with the synthesized peptide.

Note

For research use only.