

Summary

Production Name	PDXDC1 Rabbit Polyclonal Antibody
Description	Rabbit Polyclonal Antibody
Host	Rabbit
Application	WB,ELISA
Reactivity	Human,Mouse,Rat

Performance

Conjugation	Unconjugated
Modification	Unmodified
Isotype	IgG
Clonality	Polyclonal
Form	Liquid
Storage	Store at 4°C short term. Aliquot and store at -20°C long term. Avoid freeze/thaw cycles.
Buffer	Liquid in PBS containing 50% glycerol, 0.5% BSA and 0.02% New type preservative N.
Purification	Affinity purification

Immunogen

Gene Name	PDXDC1
Alternative Names	PDXDC1; KIAA0251; Pyridoxal-dependent decarboxylase domain-containing protein 1
Gene ID	23042.0
SwissProt ID	Q6P996.The antiserum was produced against synthesized peptide derived from human PDXDC1. AA range:677-726

Application

Dilution Ratio	WB 1:500 - 1:2000. ELISA: 1:10000..
Molecular Weight	87kD

Background

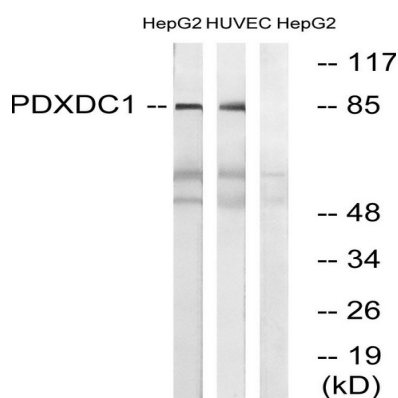
Product Name: PDXDC1 Rabbit Polyclonal Antibody
Catalog #: APRab15938



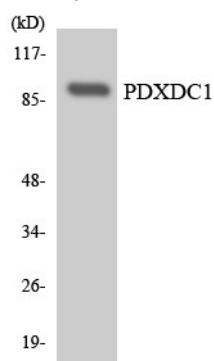
cofactor:Pyridoxal phosphate.,PTM:Phosphorylated upon DNA damage, probably by ATM or ATR.,similarity:Belongs to the group II decarboxylase family.,cofactor:Pyridoxal phosphate.,PTM:Phosphorylated upon DNA damage, probably by ATM or ATR.,similarity:Belongs to the group II decarboxylase family.,

Research Area

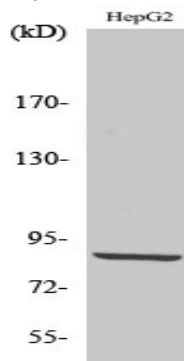
Image Data



Western blot analysis of lysates from HepG2 and HUVEC cells, using PDXDC1 Antibody. The lane on the right is blocked with the synthesized peptide.



Western blot analysis of the lysates from HeLa cells using PDXDC1 antibody.



Product Name: PDXDC1 Rabbit Polyclonal Antibody
Catalog #: APRab15938



Western Blot analysis of various cells using PDXDC1 Polyclonal Antibody

Note

For research use only.