

## Summary

<b>Production Name</b>	PDRG1 Rabbit Polyclonal Antibody
<b>Description</b>	Rabbit Polyclonal Antibody
<b>Host</b>	Rabbit
<b>Application</b>	WB,IHC,ELISA
<b>Reactivity</b>	Human,Mouse,Rat

## Performance

<b>Conjugation</b>	Unconjugated
<b>Modification</b>	Unmodified
<b>Isotype</b>	IgG
<b>Clonality</b>	Polyclonal
<b>Form</b>	Liquid
<b>Storage</b>	Store at 4°C short term. Aliquot and store at -20°C long term. Avoid freeze/thaw cycles.
<b>Buffer</b>	Liquid in PBS containing 50% glycerol, 0.5% BSA and 0.02% New type preservative N.
<b>Purification</b>	Affinity purification

## Immunogen

<b>Gene Name</b>	PDRG1
<b>Alternative Names</b>	PDRG1; C20orf126; PDRG; p53 and DNA damage-regulated protein 1
<b>Gene ID</b>	81572.0
<b>SwissProt ID</b>	Q9NUG6.The antiserum was produced against synthesized peptide derived from human PDRG1. AA range:58-107

## Application

<b>Dilution Ratio</b>	WB 1:500 - 1:2000. IHC 1:100 - 1:300. ELISA: 1:40000..
<b>Molecular Weight</b>	19kD

## Background

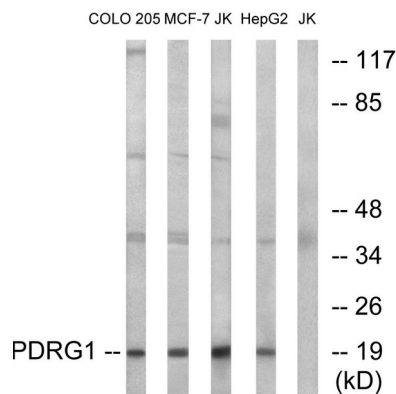
**Product Name: PDRG1 Rabbit Polyclonal Antibody**  
**Catalog #: AP Rab15933**



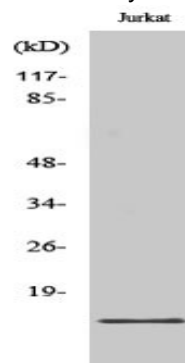
function: May play a role in chaperone-mediated protein folding ., induction: By UV and repressed by TP53/p53 ., similarity: Belongs to the prefoldin subunit beta family ., tissue specificity: Predominantly expressed in normal testis and exhibits reduced but detectable expression in other organs ., function: May play a role in chaperone-mediated protein folding ., induction: By UV and repressed by TP53/p53 ., similarity: Belongs to the prefoldin subunit beta family ., tissue specificity: Predominantly expressed in normal testis and exhibits reduced but detectable expression in other organs .,

## Research Area

## Image Data

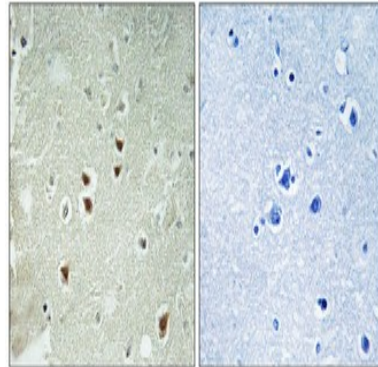


Western blot analysis of lysates from Jurkat, COLO, MCF-7, and HepG2 cells, using PDRG1 Antibody. The lane on the right is blocked with the synthesized peptide.



Western Blot analysis of various cells using PDRG1 Polyclonal Antibody

**Product Name: PDRG1 Rabbit Polyclonal Antibody**  
**Catalog #: APRab15933**



Immunohistochemical analysis of paraffin-embedded Human brain. Antibody was diluted at 1:100 (4°, overnight) . High-pressure and temperature Tris-EDTA, pH8.0 was used for antigen retrieval. Negative control (right) obtained from antibody was pre-absorbed by immunogen peptide.

**Note**

For research use only.