

Summary

Production Name	PDP2 Rabbit Polyclonal Antibody
Description	Rabbit Polyclonal Antibody
Host	Rabbit
Application	WB
Reactivity	Human,Rat,Mouse

Performance

Conjugation	Unconjugated
Modification	Unmodified
Isotype	IgG
Clonality	Polyclonal
Form	Liquid
Storage	Store at 4°C short term. Aliquot and store at -20°C long term. Avoid freeze/thaw cycles.
Buffer	Liquid in PBS containing 50% glycerol, 0.5% BSA and 0.02% New type preservative N.
Purification	Affinity purification

Immunogen

Gene Name	PDP2
Alternative Names	PDP2; KIAA1348; [Pyruvate dehydrogenase [acetyl-transferring]]-phosphatase 2, mitochondrial; PDP 2; Pyruvate dehydrogenase phosphatase catalytic subunit 2; PDPC 2
Gene ID	57546.0
SwissProt ID	Q9P2J9.Synthesized peptide derived from PDP2 . at AA range: 70-150

Application

Dilution Ratio	WB 1:500-2000; ELISA 2000-20000
Molecular Weight	59kD

Background

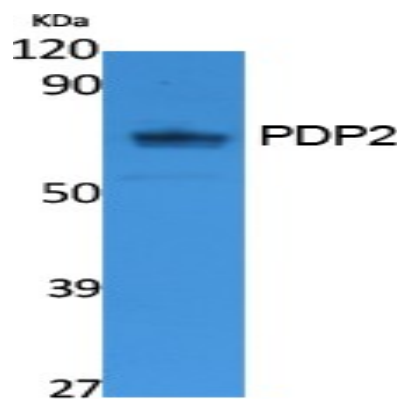
Product Name: PDP2 Rabbit Polyclonal Antibody
Catalog #: APRab15930



This gene is a mitochondrial protein that functions as a phosphatase and is involved in the enzymatic resetting of the pyruvate dehydrogenase complex. Alternative splicing results in multiple transcript variants encoding the same protein. [provided by RefSeq, Aug 2016],catalytic activity:[Pyruvate dehydrogenase (acetyl-transferring)] phosphate + H(2)O = [pyruvate dehydrogenase (acetyl-transferring)] + phosphate.,cofactor: Binds 2 magnesium ions per subunit.,function: Catalyzes the dephosphorylation and concomitant reactivation of the alpha subunit of the E1 component of the pyruvate dehydrogenase complex.,similarity: Belongs to the PP2C family.,subunit: Heterodimer of a catalytic subunit and a FAD protein of unknown function.,

Research Area

Image Data



Western Blot analysis of extracts from K562 cells, using PDP2 Polyclonal Antibody.. Secondary antibody was diluted at 1:20000

Note

For research use only.