

## Summary

|                        |                                  |
|------------------------|----------------------------------|
| <b>Production Name</b> | PD-L2 Rabbit Polyclonal Antibody |
| <b>Description</b>     | Rabbit Polyclonal Antibody       |
| <b>Host</b>            | Rabbit                           |
| <b>Application</b>     | WB,IHC,ELISA                     |
| <b>Reactivity</b>      | Human,Rat,Mouse                  |

## Performance

|                     |  |
|---------------------|--|
| <b>Conjugation</b>  | Unconjugated   |
| <b>Modification</b> | Unmodified   |
| <b>Isotype</b>      | IgG  |
| <b>Clonality</b>    | Polyclonal   |
| <b>Form</b>         | Liquid   |
| <b>Storage</b>      | Store at 4°C short term. Aliquot and store at -20°C long term. Avoid freeze/thaw cycles. |
| <b>Buffer</b>       | Liquid in PBS containing 50% glycerol, 0.5% BSA and 0.02% New type preservative N.       |
| <b>Purification</b> | Affinity purification  |

## Immunogen

|                          |   |
|--------------------------|---|
| <b>Gene Name</b>         | PDCD1LG2 B7DC CD273 PDCD1L2 PDL2  |
| <b>Alternative Names</b> | Programmed cell death 1 ligand 2 (PD-1 ligand 2;PD-L2;PDCD1 ligand 2;Programmed death ligand 2;Butyrophilin B7-DC;B7-DC;CD antigen CD273) |
| <b>Gene ID</b>           | 80380.0   |
| <b>SwissProt ID</b>      | Q9BQ51.Synthetic peptide from human protein at AA range: 31-80  |

## Application

|                         |  |
|-------------------------|--|
| <b>Dilution Ratio</b>   | WB 1:500-2000,IHC-p 1:50-200, ELISA 1:10000-20000. |
| <b>Molecular Weight</b> | 30kD   |

## Background

**Product Name: PD-L2 Rabbit Polyclonal Antibody**  
**Catalog #: APRab15923**

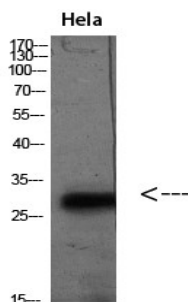


function:Involved in the costimulatory signal, essential for T-cell proliferation and IFNG production in a PDCD1-independent manner. Interaction with PDCD1 inhibits T-cell proliferation by blocking cell cycle progression and cytokine production.,induction:Up-regulated by IFNG stimulation in monocytes and induced on dendritic cells grown from peripheral blood mononuclear cells with CSF2 and IL4.,similarity:Belongs to the immunoglobulin superfamily. BTN/MOG family.,similarity:Contains 1 Ig-like C2-type (immunoglobulin-like) domain.,similarity:Contains 1 Ig-like V-type (immunoglobulin-like) domain.,subunit:Interacts with PDCD1.,tissue specificity:Highly expressed in heart, placenta, pancreas, lung and liver and weakly expressed in spleen, lymph nodes and thymus.,function:Involved in the costimulatory signal, essential for T-cell proliferation and IFNG production in a PDCD1-independent manner. Interaction with PDCD1 inhibits T-cell proliferation by blocking cell cycle progression and cytokine production.,induction:Up-regulated by IFNG stimulation in monocytes and induced on dendritic cells grown from peripheral blood mononuclear cells with CSF2 and IL4.,similarity:Belongs to the immunoglobulin superfamily. BTN/MOG family.,similarity:Contains 1 Ig-like C2-type (immunoglobulin-like) domain.,similarity:Contains 1 Ig-like V-type (immunoglobulin-like) domain.,subunit:Interacts with PDCD1.,tissue specificity:Highly expressed in heart, placenta, pancreas, lung and liver and weakly expressed in spleen, lymph nodes and thymus.,

## Research Area

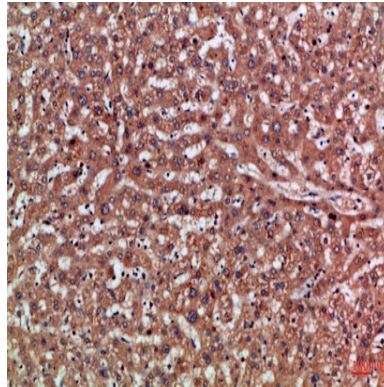
Cell adhesion molecules (CAMs);

## Image Data



Western blot analysis of HeLa (TSA 400nM 24h) lysate, antibody was diluted at 2000. Secondary antibody was diluted at 1:20000

**Product Name: PD-L2 Rabbit Polyclonal Antibody**  
**Catalog #: APRab15923**



Immunohistochemical analysis of paraffin-embedded Human-liver, antibody was diluted at 1:100

**Note**

For research use only.