

## Summary

<b>Production Name</b>	PDE4B/C/D Rabbit Polyclonal Antibody
<b>Description</b>	Rabbit Polyclonal Antibody
<b>Host</b>	Rabbit
<b>Application</b>	IHC,WB,
<b>Reactivity</b>	Human,Mouse,Rat

## Performance

<b>Conjugation</b>	Unconjugated
<b>Modification</b>	Unmodified
<b>Isotype</b>	IgG
<b>Clonality</b>	Polyclonal
<b>Form</b>	Liquid
<b>Storage</b>	Store at 4°C short term. Aliquot and store at -20°C long term. Avoid freeze/thaw cycles.
<b>Buffer</b>	Liquid in PBS containing 50% glycerol, 0.5% BSA and 0.02% New type preservative N.
<b>Purification</b>	Affinity purification

## Immunogen

<b>Gene Name</b>	PDE4B/PDE4C/PDE4D
<b>Alternative Names</b>	PDE4B; DPDE4; cAMP-specific 3'; 5'-cyclic phosphodiesterase 4B; DPDE4; PDE32; PDE4C; DPDE1; cAMP-specific 3',5'-cyclic phosphodiesterase 4C; DPDE1; PDE21; PDE4D; DPDE3; cAMP-specific 3',5'-cyclic phosphodiesterase 4D; DPDE3; PDE43
<b>Gene ID</b>	5144/5142/5143
<b>SwissProt ID</b>	Q07343/Q08493/Q08499.The antiserum was produced against synthesized peptide derived from human PDE4D. AA range:156-205

## Application

<b>Dilution Ratio</b>	WB 1:500 - 1:2000. IHC 1:100 - 1:300. ELISA: 1:10000..
<b>Molecular Weight</b>	76kD

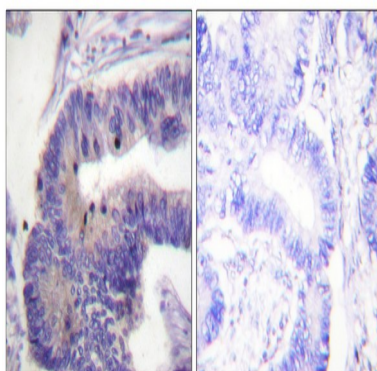
## Background

This gene is a member of the type IV, cyclic AMP (cAMP)-specific, cyclic nucleotide phosphodiesterase (PDE) family. The encoded protein regulates the cellular concentrations of cyclic nucleotides and thereby play a role in signal transduction. Altered activity of this protein has been associated with schizophrenia and bipolar affective disorder. Alternative splicing and the use of alternative promoters results in multiple transcript variants encoding different isoforms. [provided by RefSeq, Jul 2014], alternative products: Additional isoforms seem to exist, catalytic activity: Adenosine 3',5'-cyclic phosphate + H<sub>2</sub>O = adenosine 5'-phosphate, enzyme regulation: Inhibited by rolipram, function: May be involved in mediating central nervous system effects of therapeutic agents ranging from antidepressants to antiasthmatic and anti-inflammatory agents, pathway: Purine metabolism; cAMP degradation; AMP from cAMP: step 1/1, similarity: Belongs to the cyclic nucleotide phosphodiesterase family, tissue specificity: Expressed in brain, heart, lung and skeletal muscle,

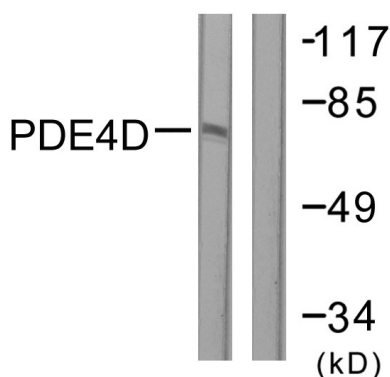
## Research Area

Purine metabolism;

## Image Data



Immunohistochemistry analysis of paraffin-embedded human colon carcinoma tissue, using PDE4D Antibody. The picture on the right is blocked with the synthesized peptide.

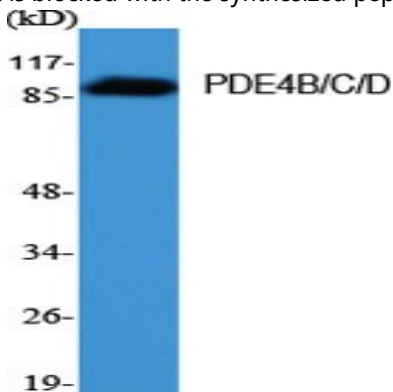


Western blot analysis of lysates from K562 cells, treated with H<sub>2</sub>O<sub>2</sub> 100uM 30', using PDE4D Antibody. The lane on the

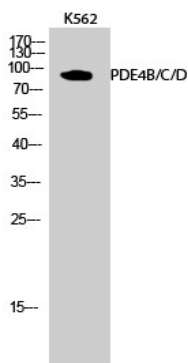
Product Name: PDE4B/C/D Rabbit Polyclonal Antibody  
Catalog #: APRab15891



right is blocked with the synthesized peptide.



Western Blot analysis of various cells using PDE4B/C/D Polyclonal Antibody



Western Blot analysis of K562 cells using PDE4B/C/D Polyclonal Antibody

## Note

For research use only.