

## Summary

<b>Production Name</b>	PCTAIRE-2 Rabbit Polyclonal Antibody
<b>Description</b>	Rabbit Polyclonal Antibody
<b>Host</b>	Rabbit
<b>Application</b>	WB
<b>Reactivity</b>	Human,Mouse,Rat

## Performance

<b>Conjugation</b>	Unconjugated
<b>Modification</b>	Unmodified
<b>Isotype</b>	IgG
<b>Clonality</b>	Polyclonal
<b>Form</b>	Liquid
<b>Storage</b>	Store at 4°C short term. Aliquot and store at -20°C long term. Avoid freeze/thaw cycles.
<b>Buffer</b>	Liquid in PBS containing 50% glycerol, 0.5% BSA and 0.02% New type preservative N.
<b>Purification</b>	Affinity purification

## Immunogen

<b>Gene Name</b>	CDK17
<b>Alternative Names</b>	CDK17; PCK2; Cyclin-dependent kinase 17; Cell division protein kinase 17; PCTAIRE-motif protein kinase 2; Serine/threonine-protein kinase PCTAIRE-2
<b>Gene ID</b>	5128.0
<b>SwissProt ID</b>	Q00537.Synthesized peptide derived from PCTAIRE-2 . at AA range: 70-150

## Application

<b>Dilution Ratio</b>	WB 1:500-1:2000. ELISA: 1:20000.
<b>Molecular Weight</b>	

## Background

The protein encoded by this gene belongs to the cdc2/cdkx subfamily of the ser/thr family of protein kinases. It has

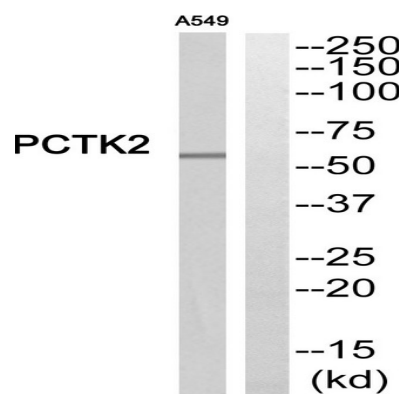
**Product Name: PCTAIRE-2 Rabbit Polyclonal Antibody**  
**Catalog #: APRab15869**



similarity to a rat protein that is thought to play a role in terminally differentiated neurons. Alternatively spliced transcript variants encoding different isoforms have been found. [provided by RefSeq, Jul 2010],similarity:Belongs to the protein kinase superfamily.,

## Research Area

## Image Data



Western blot analysis of PCK2 Antibody. The lane on the right is blocked with the PCK2 peptide.

## Note

For research use only.