

## Summary

<b>Production Name</b>	PC-PLD4 Rabbit Polyclonal Antibody
<b>Description</b>	Rabbit Polyclonal Antibody
<b>Host</b>	Rabbit
<b>Application</b>	WB,
<b>Reactivity</b>	Human,Mouse,Rat

## Performance

<b>Conjugation</b>	Unconjugated
<b>Modification</b>	Unmodified
<b>Isotype</b>	IgG
<b>Clonality</b>	Polyclonal
<b>Form</b>	Liquid
<b>Storage</b>	Store at 4°C short term. Aliquot and store at -20°C long term. Avoid freeze/thaw cycles.
<b>Buffer</b>	Liquid in PBS containing 50% glycerol, 0.5% BSA and 0.02% New type preservative N.
<b>Purification</b>	Affinity purification

## Immunogen

<b>Gene Name</b>	PLD4
<b>Alternative Names</b>	PLD4; C14orf175; Phospholipase D4; PLD 4; Choline phosphatase 4; Phosphatidylcholine-hydrolyzing phospholipase D4
<b>Gene ID</b>	122618.0
<b>SwissProt ID</b>	Q96BZ4.The antiserum was produced against synthesized peptide derived from human PLD4. AA range:457-506

## Application

<b>Dilution Ratio</b>	WB 1:500-2000
<b>Molecular Weight</b>	50kD

**Product Name: PC-PLD4 Rabbit Polyclonal Antibody**  
**Catalog #: APRab15864**

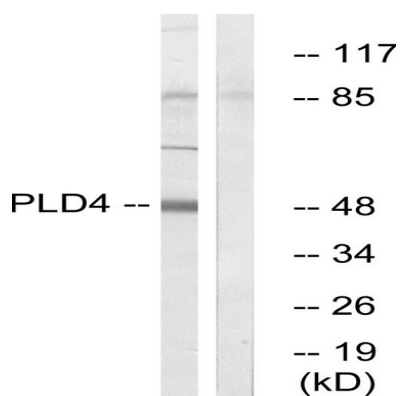


## Background

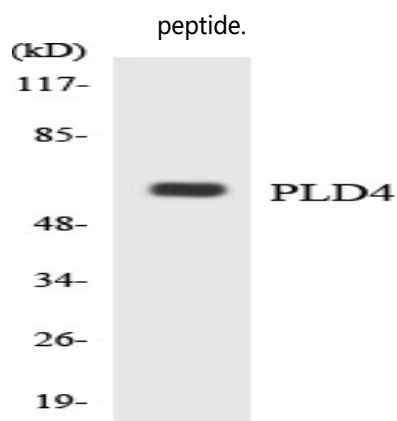
catalytic activity:A phosphatidylcholine + H(2)O = choline + a phosphatidate.,similarity:Belongs to the phospholipase D family.,similarity:Contains 2 PLD phosphodiesterase domains.,catalytic activity:A phosphatidylcholine + H(2)O = choline + a phosphatidate.,similarity:Belongs to the phospholipase D family.,similarity:Contains 2 PLD phosphodiesterase domains.,

## Research Area

## Image Data

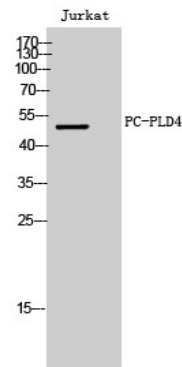


Western blot analysis of lysates from Jurkat cells, using PLD4 Antibody. The lane on the right is blocked with the synthesized



Western blot analysis of the lysates from K562 cells using PLD4 antibody.

**Product Name: PC-PLD4 Rabbit Polyclonal Antibody**  
**Catalog #: APRab15864**



Western Blot analysis of Jurkat cells using PC-PLD4 Polyclonal Antibody

**Note**

For research use only.