

Product Name: PCNA Rabbit Polyclonal Antibody
Catalog #: APRab15855



Summary

Production Name	PCNA Rabbit Polyclonal Antibody
Description	Rabbit Polyclonal Antibody
Host	Rabbit
Application	IHC, WB,
Reactivity	Human, Mouse, Rat, Monkey, Rabbit

Performance

Conjugation	Unconjugated
Modification	Unmodified
Isotype	IgG
Clonality	Polyclonal
Form	Liquid
Storage	Store at 4°C short term. Aliquot and store at -20°C long term. Avoid freeze/thaw cycles.
Buffer	Liquid in PBS containing 50% glycerol, 0.5% BSA and 0.02% New type preservative N.
Purification	Affinity purification

Immunogen

Gene Name	PCNA
Alternative Names	PCNA; Proliferating cell nuclear antigen; PCNA; Cyclin
Gene ID	5111.0
SwissProt ID	P12004. The antiserum was produced against synthesized peptide derived from human PCNA. AA range: 61-110

Application

Dilution Ratio	WB 1:500-2000; IHC-p 1:100-500; ELISA 1:5000-20000
Molecular Weight	30-33kd

Background

Product Name: PCNA Rabbit Polyclonal Antibody
Catalog #: APRab15855

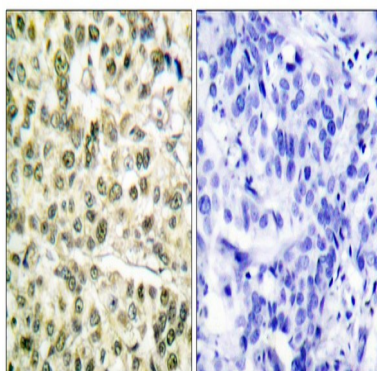


The protein encoded by this gene is found in the nucleus and is a cofactor of DNA polymerase delta. The encoded protein acts as a homotrimer and helps increase the processivity of leading strand synthesis during DNA replication. In response to DNA damage, this protein is ubiquitinated and is involved in the RAD6-dependent DNA repair pathway. Two transcript variants encoding the same protein have been found for this gene. Pseudogenes of this gene have been described on chromosome 4 and on the X chromosome. [provided by RefSeq, Jul 2008],disease:Antibodies are present in sera from patients with systemic lupus erythematosus.,function:This protein is an auxiliary protein of DNA polymerase delta and is involved in the control of eukaryotic DNA replication by increasing the polymerase's processibility during elongation of the leading strand.,online information:PCNA entry,PTM:Upon methyl methanesulfonate-induced DNA damage, mono-ubiquitinated by the UBE2B-RAD18 complex on Lys-164. This induces non-canonical poly-ubiquitination on Lys-164 through 'Lys-63' linkage of ubiquitin moieties by the E2 complex UBE2N-UBE2V2 and the E3 ligases RNF8 and SHPRH, which are required for DNA repair.,similarity:Belongs to the PCNA family.,subunit:Homotrimer. Interacts with KCTD10. Interacts with PPP1R15A (By similarity). Forms a complex with activator 1 heteropentamer in the presence of ATP. Interacts with POLH, POLK, DNMT1, ERCC5/XPG, FEN1, CDC6, APEX2 and POLDIP2. Interacts with EXO1 and SHPRH. Forms a ternary complex with DNTTIP2 and core histone. Interacts with POLD1, POLD3 and POLD4. Interacts with BAZ1B/WSTF; the interaction is direct.,

Research Area

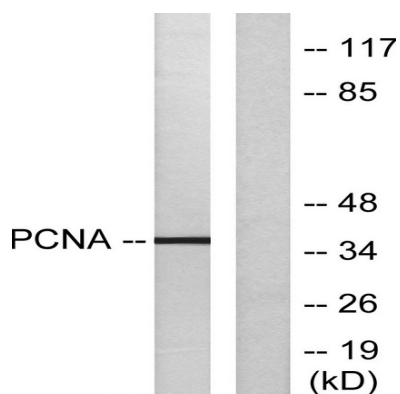
Protein_Acetylation

Image Data

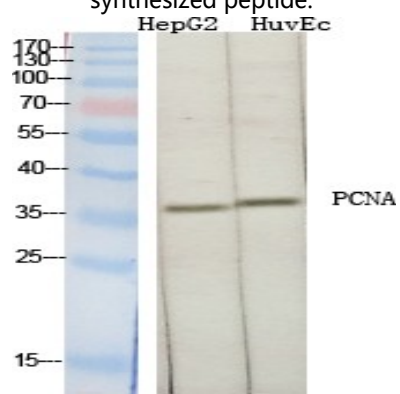


Immunohistochemistry analysis of paraffin-embedded human breast carcinoma tissue, using PCNA Antibody. The picture on the right is blocked with the synthesized peptide.

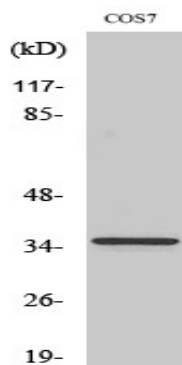
Product Name: PCNA Rabbit Polyclonal Antibody
Catalog #: APRab15855



Western blot analysis of lysates from HepG2 cells, using PCNA Antibody. The lane on the right is blocked with the synthesized peptide.



Western Blot analysis of various cells using PCNA Polyclonal Antibody diluted at 1: 2000 cells nucleus extracted by Minute TM Cytoplasmic and Nuclear Fractionation kit (SC-003, Inventbiotech, MN, USA) .



Western Blot analysis of COS7 cells using PCNA Polyclonal Antibody diluted at 1: 2000 cells nucleus extracted by Minute TM Cytoplasmic and Nuclear Fractionation kit (SC-003, Inventbiotech, MN, USA) .

Note

For research use only.