

**Product Name: Pax-8 Rabbit Polyclonal Antibody**  
**Catalog #: APRab15797**



---

## Summary

<b>Production Name</b>	Pax-8 Rabbit Polyclonal Antibody
<b>Description</b>	Rabbit Polyclonal Antibody
<b>Host</b>	Rabbit
<b>Application</b>	WB,IHC,IF,ELISA
<b>Reactivity</b>	Human,Mouse,Rat

## Performance

<b>Conjugation</b>	Unconjugated
<b>Modification</b>	Unmodified
<b>Isotype</b>	IgG
<b>Clonality</b>	Polyclonal
<b>Form</b>	Liquid
<b>Storage</b>	Store at 4°C short term. Aliquot and store at -20°C long term. Avoid freeze/thaw cycles.
<b>Buffer</b>	Liquid in PBS containing 50% glycerol, 0.5% BSA and 0.02% New type preservative N.
<b>Purification</b>	Affinity purification

## Immunogen

<b>Gene Name</b>	PAX8
<b>Alternative Names</b>	PAX8; Paired box protein Pax-8
<b>Gene ID</b>	7849.0
<b>SwissProt ID</b>	Q06710.The antiserum was produced against synthesized peptide derived from human Pax-8. AA range:145-194

## Application

<b>Dilution Ratio</b>	WB 1:500 - 1:2000. IHC 1:100 - 1:300. ELISA: 1:10000.. IF 1:50-200
<b>Molecular Weight</b>	62kD

## Background

---

**Product Name: Pax-8 Rabbit Polyclonal Antibody**  
**Catalog #: APRab15797**

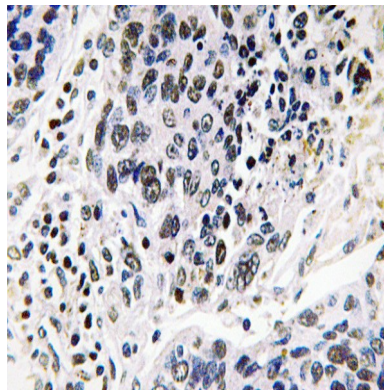


This gene encodes a member of the paired box (PAX) family of transcription factors. Members of this gene family typically encode proteins that contain a paired box domain, an octapeptide, and a paired-type homeodomain. This nuclear protein is involved in thyroid follicular cell development and expression of thyroid-specific genes. Mutations in this gene have been associated with thyroid dysgenesis, thyroid follicular carcinomas and atypical follicular thyroid adenomas. Alternatively spliced transcript variants encoding different isoforms have been described. [provided by RefSeq, Mar 2010],caution:The sequence shown here is derived from an Ensembl automatic analysis pipeline and should be considered as preliminary data.,developmental stage:In developing excretory system, during thyroid differentiation and in adult thyroid.,disease:Defects in PAX8 are the cause of congenital hypothyroidism non-goitrous type 2 (CHNG2) [MIM:218700]. CHNG2 is a disease characterized by thyroid dysgenesis, the most frequent cause of congenital hypothyroidism, accounting for 85% of case. The thyroid gland can be completely absent (athyreosis), ectopically located and/or severely hypoplastic. Ectopic thyroid gland is the most frequent malformation, with thyroid tissue being found most often at the base of the tongue.,function:Transcription factor for the thyroid-specific expression of the genes exclusively expressed in the thyroid cell type, maintaining the functional differentiation of such cells.,similarity:Contains 1 paired domain.,tissue specificity:Expressed in the excretory system, thyroid gland and Wilms tumors.,

## Research Area

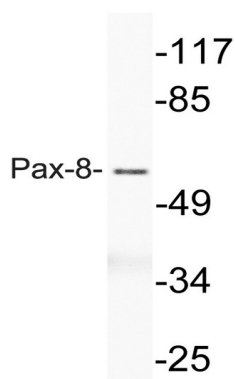
Pathways in cancer;Thyroid cancer;

## Image Data



Immunohistochemistry analysis of Pax-8 antibody in paraffin-embedded human lung carcinoma tissue.

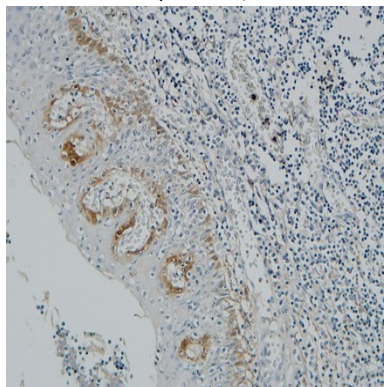
**Product Name: Pax-8 Rabbit Polyclonal Antibody**  
**Catalog #: APRab15797**



Western blot analysis of lysate from HT-29 cells, using Pax-8 antibody.

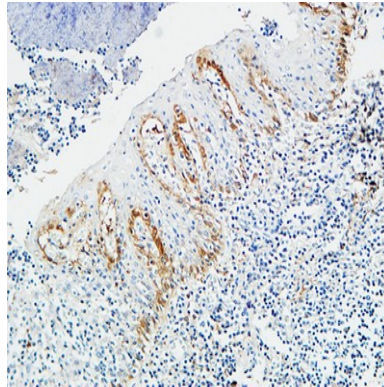


Western Blot analysis of various cells using Pax-8 Polyclonal Antibody cells nucleus extracted by Minute TM Cytoplasmic and Nuclear Fractionation kit (SC-003, Inventbiotech, MN, USA) .

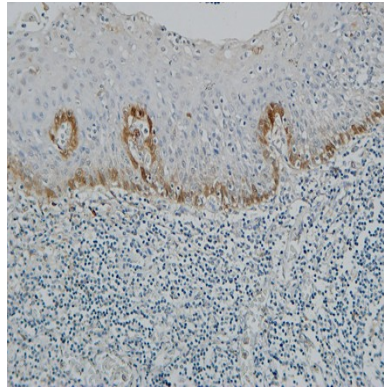


Immunohistochemical analysis of paraffin-embedded Human Amygdala. 1, Antibody was diluted at 1:100 (4°, overnight) . 2, High-pressure and temperature EDTA, pH8.0 was used for antigen retrieval. 3, Secondary antibody was diluted at 1:200 (room temperature, 30min) .

**Product Name: Pax-8 Rabbit Polyclonal Antibody**  
**Catalog #: APRab15797**



Immunohistochemical analysis of paraffin-embedded Human Amygdala. 1, Antibody was diluted at 1:100 (4°,overnight) . 2, High-pressure and temperature EDTA, pH8.0 was used for antigen retrieval. 3,Secondary antibody was diluted at 1:200 (room temperature, 30min) .



Immunohistochemical analysis of paraffin-embedded Human Amygdala. 1, Antibody was diluted at 1:100 (4°,overnight) . 2, High-pressure and temperature EDTA, pH8.0 was used for antigen retrieval. 3,Secondary antibody was diluted at 1:200 (room temperature, 30min) .

### **Note**

For research use only.