

Summary

Production Name	PARP-4 Rabbit Polyclonal Antibody
Description	Rabbit Polyclonal Antibody
Host	Rabbit
Application	WB,IHC,ELISA
Reactivity	Human,Rat,Mouse

Performance

Conjugation	Unconjugated
Modification	Unmodified
Isotype	IgG
Clonality	Polyclonal
Form	Liquid
Storage	Store at 4°C short term. Aliquot and store at -20°C long term. Avoid freeze/thaw cycles.
Buffer	Liquid in PBS containing 50% glycerol, 0.5% BSA and 0.02% New type preservative N.
Purification	Affinity purification

Immunogen

Gene Name	PARP4
Alternative Names	PARP4; ADPRTL1; KIAA0177; PARPL; Poly [ADP-ribose] polymerase 4; PARP-4; 193 kDa vault protein; ADP-ribosyltransferase diphtheria toxin-like 4; ARTD4; PARP-related/lalpal-related H5/proline-rich; PH5P; Vault poly(ADP-ribose) polymerase; VP
Gene ID	143.0
SwissProt ID	Q9UUK3.The antiserum was produced against synthesized peptide derived from human PARP4. AA range:1151-1200

Application

Dilution Ratio	WB 1:500-2000 IHC 1:100 - 1:300. ELISA: 1:10000..
-----------------------	---

Product Name: PARP-4 Rabbit Polyclonal Antibody
Catalog #: AP Rab15768



Molecular Weight

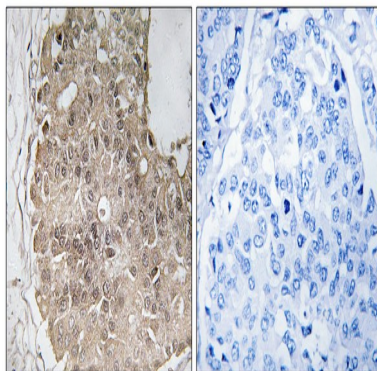
Background

This gene encodes poly(ADP-ribosyl)transferase-like 1 protein, which is capable of catalyzing a poly(ADP-ribosyl)ation reaction. This protein has a catalytic domain which is homologous to that of poly (ADP-ribosyl) transferase, but lacks an N-terminal DNA binding domain which activates the C-terminal catalytic domain of poly (ADP-ribosyl) transferase. Since this protein is not capable of binding DNA directly, its transferase activity may be activated by other factors such as protein-protein interaction mediated by the extensive carboxyl terminus. [provided by RefSeq, Jul 2008], catalytic activity: NAD(+) + (ADP-D-ribosyl)(n)-acceptor = nicotinamide + (ADP-D-ribosyl)(n+1)-acceptor., similarity: Contains 1 BRCT domain., similarity: Contains 1 PARP alpha-helical domain., similarity: Contains 1 PARP catalytic domain., similarity: Contains 1 VWFA domain., subcellular location: Also found in the nucleus, associated with mitotic spindles., subunit: Component of the vault ribonucleoprotein particle, at least composed of MVP, PARP4 and one or more vault RNAs (vRNAs). Binds to MVP. Associates with TEP1., tissue specificity: Widely expressed; the highest levels are in the kidney; also detected in heart, placenta, lung, liver, skeletal muscle, spleen, leukocytes and pancreas.,

Research Area

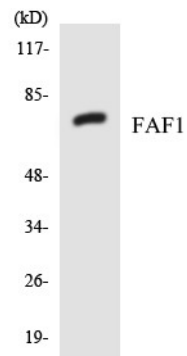
Base excision repair;

Image Data



Immunohistochemistry analysis of paraffin-embedded human breast carcinoma, using PARP4 Antibody. The picture on the right is blocked with the synthesized peptide.

Product Name: PARP-4 Rabbit Polyclonal Antibody
Catalog #: APRab15768



Western blot analysis of the lysates from HT-29 cells using FAF1 antibody.

Note

For research use only.