

Product Name: PAR-6 β Rabbit Polyclonal Antibody
Catalog #: APRab15750



Summary

Production Name	PAR-6 β Rabbit Polyclonal Antibody
Description	Rabbit Polyclonal Antibody
Host	Rabbit
Application	WB
Reactivity	Human,Mouse

Performance

Conjugation	Unconjugated
Modification	Unmodified
Isotype	IgG
Clonality	Polyclonal
Form	Liquid
Storage	Store at 4°C short term. Aliquot and store at -20°C long term. Avoid freeze/thaw cycles.
Buffer	Liquid in PBS containing 50% glycerol, 0.5% BSA and 0.02% New type preservative N.
Purification	Affinity purification

Immunogen

Gene Name	PARD6B
Alternative Names	PARD6B; PAR6B; Partitioning defective 6 homolog beta; PAR-6 beta; PAR-6B
Gene ID	84612.0
SwissProt ID	Q9BYG5.The antiserum was produced against synthesized peptide derived from human PARD6B. AA range:233-282

Application

Dilution Ratio	WB 1:500-1:2000. ELISA: 1:5000.
Molecular Weight	38kD

Background

This gene is a member of the PAR6 family and encodes a protein with a PSD95/Discs-large/ZO1 (PDZ) domain, an OPR

Product Name: PAR-6 β Rabbit Polyclonal Antibody
Catalog #: AP Rab15750

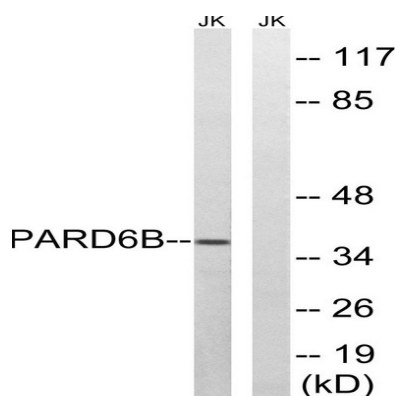


domain and a semi-Cdc42/Rac interactive binding (CRIB) domain. This cytoplasmic protein is involved in asymmetrical cell division and cell polarization processes as a member of a multi-protein complex. [provided by RefSeq, Jul 2008],domain:The PDZ domain mediates interaction with MPP5.,domain:The pseudo-CRIB domain together with the PDZ domain is required for the interaction with Rho small GTPases.,function:Adapter protein involved in asymmetrical cell division and cell polarization processes. Probably involved in formation of epithelial tight junctions. Association with PARD3 may prevent the interaction of PARD3 with F11R/JAM1, thereby preventing tight junction assembly. The PARD6-PARD3 complex links GTP-bound Rho small GTPases to atypical protein kinase C proteins.,similarity:Belongs to the PAR6 family.,similarity:Contains 1 OPR domain.,similarity:Contains 1 PDZ (DHR) domain.,similarity:Contains 1 pseudo-CRIB domain.,subunit:Interacts with PARD3. Interacts with GTP-bound forms of CDC42 and RAC1. Interacts with GTP-bound ARHQ/TC10. Interacts with MPP5 (By similarity). Interacts with the N-terminal part of PRKCI and PRKCZ. Part of a complex with PARD3, CDC42 or RAC1 and PRKCI or PRKCZ. Part of a complex with LLGL1 and PRKCI. Interacts with ALS2CR19.,tissue specificity:Expressed in pancreas and in both adult and fetal kidney. Weakly expressed in placenta and lung. Not expressed in other tissues.,

Research Area

Endocytosis;Tight junction;

Image Data



Western blot analysis of lysates from Jurkat cells, using PARD6B Antibody. The lane on the right is blocked with the synthesized peptide.

Note

For research use only.