

## Summary

<b>Production Name</b>	PAKy Rabbit Polyclonal Antibody
<b>Description</b>	Rabbit Polyclonal Antibody
<b>Host</b>	Rabbit
<b>Application</b>	WB,IHC,
<b>Reactivity</b>	Human,Mouse,Rat

## Performance

<b>Conjugation</b>	Unconjugated
<b>Modification</b>	Unmodified
<b>Isotype</b>	IgG
<b>Clonality</b>	Polyclonal
<b>Form</b>	Liquid
<b>Storage</b>	Store at 4°C short term. Aliquot and store at -20°C long term. Avoid freeze/thaw cycles.
<b>Buffer</b>	Liquid in PBS containing 50% glycerol, 0.5% BSA and 0.02% New type preservative N.
<b>Purification</b>	Affinity purification

## Immunogen

<b>Gene Name</b>	PAK2
<b>Alternative Names</b>	PAK2; Serine/threonine-protein kinase PAK 2; Gamma-PAK; PAK65; S6/H4 kinase; p21-activated kinase 2; PAK-2; p58
<b>Gene ID</b>	5062.0
<b>SwissProt ID</b>	Q13177.The antiserum was produced against synthesized peptide derived from human PAK2. AA range:5-54

## Application

<b>Dilution Ratio</b>	WB 1:500 - 1:2000. IHC 1:100 - 1:300. ELISA: 1:5000..
<b>Molecular Weight</b>	60kD

## Background

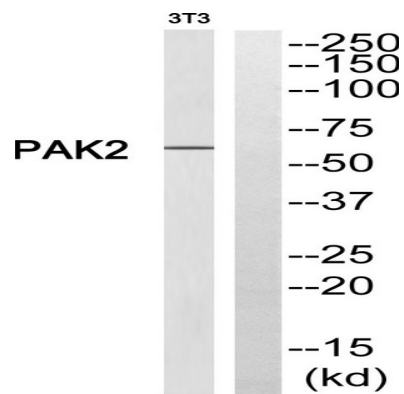
The p21 activated kinases (PAK) are critical effectors that link Rho GTPases to cytoskeleton reorganization and nuclear signaling. The PAK proteins are a family of serine/threonine kinases that serve as targets for the small GTP binding proteins, CDC42 and RAC1, and have been implicated in a wide range of biological activities. The protein encoded by this gene is activated by proteolytic cleavage during caspase-mediated apoptosis, and may play a role in regulating the apoptotic events in the dying cell. [provided by RefSeq, Jul 2008],catalytic activity:ATP + a phosphoprotein.,enzyme regulation:Activated by binding small G proteins. Binding of GTP-bound CDC42 or RAC1 to the autoregulatory region releases monomers from the autoinhibited dimer, enables phosphorylation of Thr-402 and allows the kinase domain to adopt an active structure (By similarity). Following caspase cleavage, autophosphorylated PAK-2p34 is constitutively active.,function:The activated kinase acts on a variety of targets. Phosphorylates ribosomal protein S6, histone H4 and myelin basic protein. Full length PAK 2 stimulates cell survival and cell growth. The process is, at least in part, mediated by phosphorylation and inhibition of pro-apoptotic BAD. Caspase-activated PAK-2p34 is involved in cell death response, probably involving the JNK signaling pathway. Cleaved PAK-2p34 seems to have a higher activity than the CDC42-activated form.,PTM:During apoptosis proteolytically cleaved by caspase-3 or caspase-3-like proteases to yield active PAK-2p34.,PTM:Full length PAK 2 is autophosphorylated when activated by CDC42/p21. Following cleavage, both peptides, PAK-2p27 and PAK-2p34, become highly autophosphorylated, with PAK-2p27 being phosphorylated on serine and PAK-2p34 on threonine residues, respectively. Autophosphorylation of PAK-2p27 can occur in the absence of any effectors and is dependent on phosphorylation of Thr-402, because PAK-2p27 is acting as an exogenous substrate.,PTM:PAK-2p34 is myristoylated.,PTM:Ubiquitinated, leading to its proteosomal degradation.,similarity:Belongs to the protein kinase superfamily.,similarity:Belongs to the protein kinase superfamily. STE Ser/Thr protein kinase family. STE20 subfamily.,similarity:Contains 1 CRIB domain.,similarity:Contains 1 protein kinase domain.,subcellular location:Interaction with ARHGAP10 probably changes PAK-2p34 location to cytoplasmic perinuclear region. Myristoylation changes PAK-2p34 location to the membrane.,subunit:Interacts tightly with GTP-bound but not GDP-bound CDC42/p21 and RAC1. Interacts with SH3MD4. Interacts with and activated by HIV-1 Nef. PAK-2p34 interacts with ARHGAP10.,tissue specificity:Ubiquitously expressed. Higher levels seen in skeletal muscle, ovary, thymus and spleen.,

## Research Area

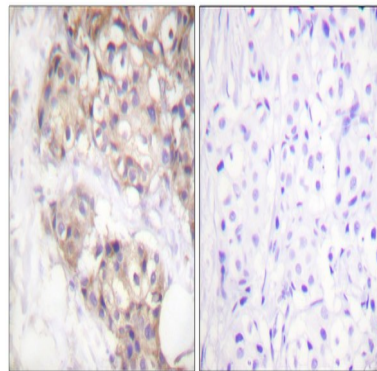
MAPK\_ERK\_Growth;MAPK\_G\_Protein;ErbB\_HER;Axon guidance;Focal adhesion;T\_Cell\_Receptor;Regulates Actin and Cytoskeleton;Renal cell carcinoma;

## Image Data

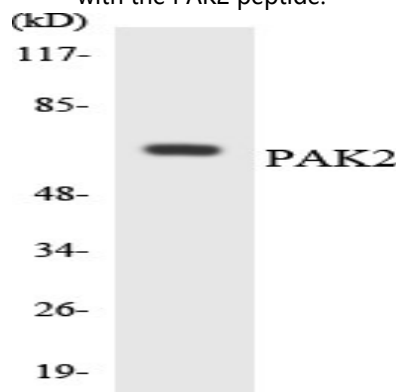
**Product Name: PAKy Rabbit Polyclonal Antibody**  
**Catalog #: APRab15717**



Western blot analysis of PAK2 Antibody. The lane on the right is blocked with the PAK2 peptide.

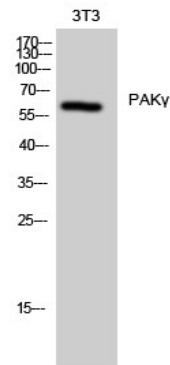


Immunohistochemistry analysis of paraffin-embedded human brain, using PAK2 Antibody. The lane on the right is blocked with the PAK2 peptide.



Western blot analysis of the lysates from COLO205 cells using PAK2 antibody.

**Product Name: PAK $\gamma$  Rabbit Polyclonal Antibody**  
**Catalog #: APRab15717**



Western Blot analysis of 3T3 cells using PAK $\gamma$  Polyclonal Antibody

**Note**

For research use only.