

---

## Summary

<b>Production Name</b>	PABP5 Rabbit Polyclonal Antibody
<b>Description</b>	Rabbit Polyclonal Antibody
<b>Host</b>	Rabbit
<b>Application</b>	WB,ELISA
<b>Reactivity</b>	Human,Rat,Mouse

## Performance

<b>Conjugation</b>	Unconjugated
<b>Modification</b>	Unmodified
<b>Isotype</b>	IgG
<b>Clonality</b>	Polyclonal
<b>Form</b>	Liquid
<b>Storage</b>	Store at 4°C short term. Aliquot and store at -20°C long term. Avoid freeze/thaw cycles.
<b>Buffer</b>	Liquid in PBS containing 50% glycerol, 0.5% BSA and 0.02% New type preservative N.
<b>Purification</b>	Affinity purification

## Immunogen

<b>Gene Name</b>	PABPC5
<b>Alternative Names</b>	PABPC5; PABP5; Polyadenylate-binding protein 5; PABP-5; Poly(A)-binding protein 5
<b>Gene ID</b>	140886.0
<b>SwissProt ID</b>	Q96DU9.The antiserum was produced against synthesized peptide derived from human PABPC5. AA range:184-233

## Application

<b>Dilution Ratio</b>	WB 1:500 - 1:2000. ELISA: 1:10000
<b>Molecular Weight</b>	43kD

## Background

---

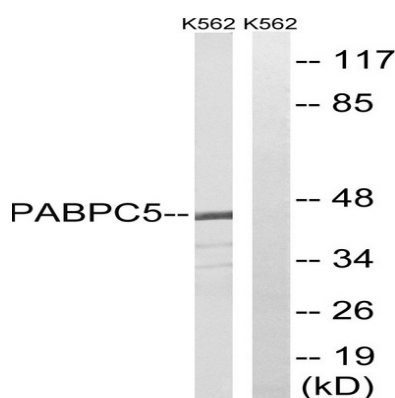
**Product Name: PABP5 Rabbit Polyclonal Antibody**  
**Catalog #: APRab15682**



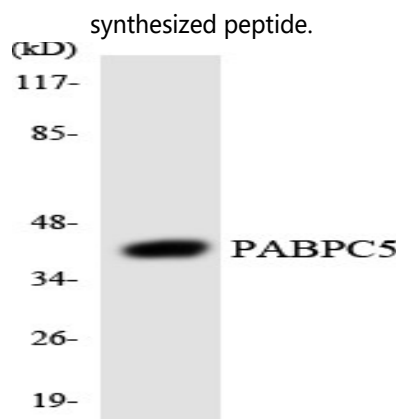
This gene encodes a protein that binds to the polyA tail found at the 3' end of most eukaryotic mRNAs. It is thought to play a role in the regulation of mRNA metabolic processes in the cytoplasm. This gene is located in a gene-poor region within the X-specific 13d-sY43 subinterval of the chromosome Xq21.3/Yp11.2 homology block. It is located close to translocation breakpoints associated with premature ovarian failure, and is therefore a potential candidate gene for this disorder. [provided by RefSeq, May 2010],function: Binds the poly(A) tail of mRNA. May be involved in cytoplasmic regulatory processes of mRNA metabolism. Can probably bind to cytoplasmic RNA sequences other than poly(A) in vivo.,similarity: Contains 4 RRM (RNA recognition motif) domains.,tissue specificity: Expressed in fetal brain and in a range of adult tissues.,

## Research Area

## Image Data



Western blot analysis of lysates from K562 cells, using PABPC5 Antibody. The lane on the right is blocked with the synthesized peptide.



Western blot analysis of the lysates from HeLa cells using PABPC5 antibody.

## Note

For research use only.

**Product Name: PABP5 Rabbit Polyclonal Antibody**  
**Catalog #: APRab15682**

---

