

Summary

Production Name	PABP3 Rabbit Polyclonal Antibody
Description	Rabbit Polyclonal Antibody
Host	Rabbit
Application	WB,IHC,ELISA
Reactivity	Human,Rat,Mouse

Performance

Conjugation	Unconjugated
Modification	Unmodified
Isotype	IgG
Clonality	Polyclonal
Form	Liquid
Storage	Store at 4°C short term. Aliquot and store at -20°C long term. Avoid freeze/thaw cycles.
Buffer	Liquid in PBS containing 50% glycerol, 0.5% BSA and 0.02% New type preservative N.
Purification	Affinity purification

Immunogen

Gene Name	PABPC3
Alternative Names	PABPC3; PABP3; PABPL3; Polyadenylate-binding protein 3; PABP-3; Poly(A)-binding protein 3; Testis-specific poly(A)-binding protein
Gene ID	5042.0
SwissProt ID	Q9H361.The antiserum was produced against synthesized peptide derived from human PABPC3. AA range:352-401

Application

Dilution Ratio	WB 1:500 - 1:2000.IHC-p:1:50-300 ELISA: 1:20000..
Molecular Weight	70kD

Product Name: PABP3 Rabbit Polyclonal Antibody
Catalog #: APRab15680

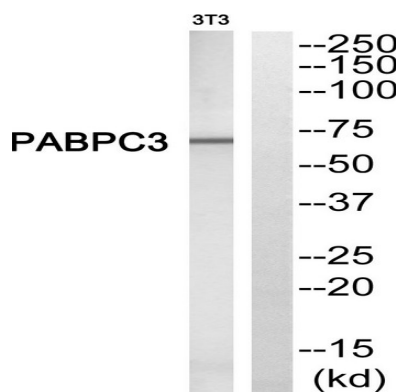


Background

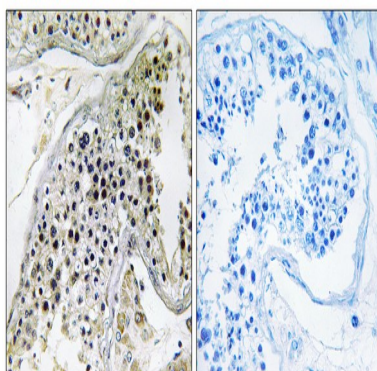
Messenger RNA stability and translation initiation are extensively under the control of poly(A)-binding proteins (PABP). See PABPC1 (MIM 604679) for background information.[supplied by OMIM, Jul 2002],function: Binds the poly(A) tail of mRNA. May be involved in cytoplasmic regulatory processes of mRNA metabolism. Binds poly(A) with a slightly lower affinity as compared to PABPC1.,similarity: Belongs to the polyadenylate-binding protein type-1 family.,similarity: Contains 1 PABC domain.,similarity: Contains 4 RRM (RNA recognition motif) domains.,tissue specificity: Testis specific.,

Research Area

Image Data

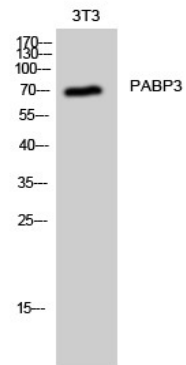


Western blot analysis of PABPC3 Antibody. The lane on the right is blocked with the PABPC3 peptide.



Immunohistochemistry analysis of paraffin-embedded human testis, using PABPC3 Antibody. The lane on the right is blocked with the PABPC3 peptide.

Product Name: PABP3 Rabbit Polyclonal Antibody
Catalog #: APRab15680



Western Blot analysis of 3T3 cells using PABP3 Polyclonal Antibody

Note

For research use only.