

**Product Name: p70 S6 kinase  $\beta$  Rabbit Polyclonal Antibody**  
**Catalog #: APRab15666**

---

## Summary

<b>Production Name</b>	p70 S6 kinase $\beta$ Rabbit Polyclonal Antibody
<b>Description</b>	Rabbit Polyclonal Antibody
<b>Host</b>	Rabbit
<b>Application</b>	WB,
<b>Reactivity</b>	Human,Mouse

## Performance

<b>Conjugation</b>	Unconjugated
<b>Modification</b>	Unmodified
<b>Isotype</b>	IgG
<b>Clonality</b>	Polyclonal
<b>Form</b>	Liquid
<b>Storage</b>	Store at 4°C short term. Aliquot and store at -20°C long term. Avoid freeze/thaw cycles.
<b>Buffer</b>	Liquid in PBS containing 50% glycerol, 0.5% BSA and 0.02% New type preservative N.
<b>Purification</b>	Affinity purification

## Immunogen

<b>Gene Name</b>	RPS6KB2 RPS6KB2; STK14B; Ribosomal protein S6 kinase beta-2; S6K-beta-2; S6K2; 70 kDa
<b>Alternative Names</b>	ribosomal protein S6 kinase 2; P70S6K2; p70-S6K 2; S6 kinase-related kinase; SRK; Serine/threonine-protein kinase 14B; p70 ribosomal S6 kinase beta; S6K-beta; p70
<b>Gene ID</b>	6199.0
<b>SwissProt ID</b>	Q9UBS0.The antiserum was produced against synthesized peptide derived from human p70 S6 Kinase beta. AA range:389-438

## Application

<b>Dilution Ratio</b>	WB 1:500 - 1:2000. ELISA: 1:5000..
<b>Molecular Weight</b>	42kD

---

**Product Name: p70 S6 kinase  $\beta$  Rabbit Polyclonal Antibody**  
**Catalog #: APRab15666**

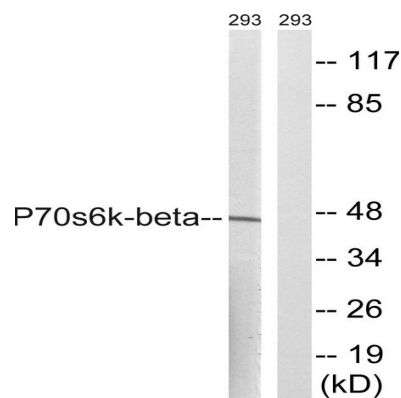
## Background

ribosomal protein S6 kinase B2(RPS6KB2) Homo sapiens This gene encodes a member of the RSK (ribosomal S6 kinase) family of serine/threonine kinases. This kinase contains a kinase catalytic domain and phosphorylates the S6 ribosomal protein and eukaryotic translation initiation factor 4B (eIF4B). Phosphorylation of S6 leads to an increase in protein synthesis and cell proliferation. [provided by RefSeq, Jan 2015],catalytic activity:ATP + a protein = ADP + a phosphoprotein.,function:Phosphorylates specifically ribosomal protein S6.,PTM:Phosphorylated upon DNA damage, probably by ATM or ATR.,similarity:Belongs to the protein kinase superfamily.,similarity:Belongs to the protein kinase superfamily. AGC Ser/Thr protein kinase family. S6 kinase subfamily.,similarity:Contains 1 AGC-kinase C-terminal domain.,similarity:Contains 1 protein kinase domain.,

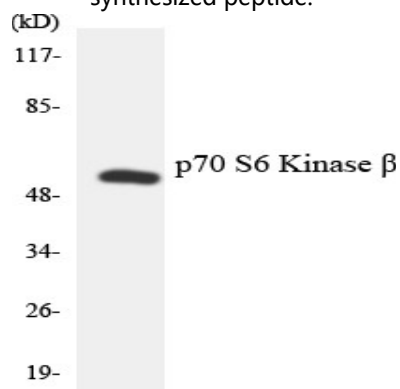
## Research Area

Insulin Receptor; Regulates Angiogenesis; mTOR; B Cell Receptor; AMPK

## Image Data

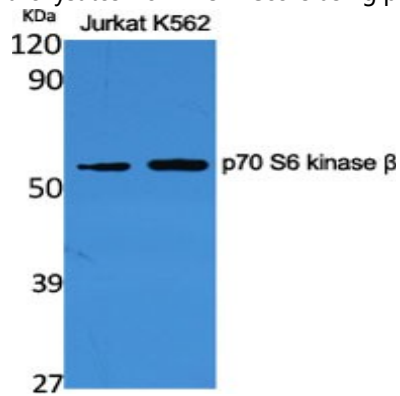


Western blot analysis of lysates from 293 cells, using p70 S6 Kinase beta Antibody. The lane on the right is blocked with the synthesized peptide.

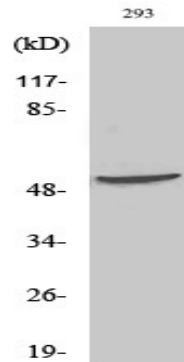


**Product Name: p70 S6 kinase  $\beta$  Rabbit Polyclonal Antibody**  
**Catalog #: APRab15666**

Western blot analysis of the lysates from HUVECcells using p70 S6 Kinase  $\beta$  antibody.



Western Blot analysis of various cells using p70 S6 kinase  $\beta$  Polyclonal Antibody



Western Blot analysis of 293 cells using p70 S6 kinase  $\beta$  Polyclonal Antibody

## Note

For research use only.