

Product Name: p39 Rabbit Polyclonal Antibody
Catalog #: APRab15624



Summary

Production Name	p39 Rabbit Polyclonal Antibody
Description	Rabbit Polyclonal Antibody
Host	Rabbit
Application	WB,IHC,ELISA
Reactivity	Human,Rat,Mouse

Performance

Conjugation	Unconjugated
Modification	Unmodified
Isotype	IgG
Clonality	Polyclonal
Form	Liquid
Storage	Store at 4°C short term. Aliquot and store at -20°C long term. Avoid freeze/thaw cycles.
Buffer	Liquid in PBS containing 50% glycerol, 0.5% BSA and 0.02% New type preservative N.
Purification	Affinity purification

Immunogen

Gene Name	CDK5R2
Alternative Names	CDK5R2; NCK5AI; Cyclin-dependent kinase 5 activator 2; CDK5 activator 2; Cyclin-dependent kinase 5 regulatory subunit 2; p39; p39I
Gene ID	8941.0
SwissProt ID	Q13319.The antiserum was produced against synthesized peptide derived from human CDK5R2. AA range:81-130

Application

Dilution Ratio	WB 1:500 - 1:2000. IHC 1:100 - 1:300. ELISA: 1:20000..
Molecular Weight	40kD

Product Name: p39 Rabbit Polyclonal Antibody
Catalog #: APRab15624

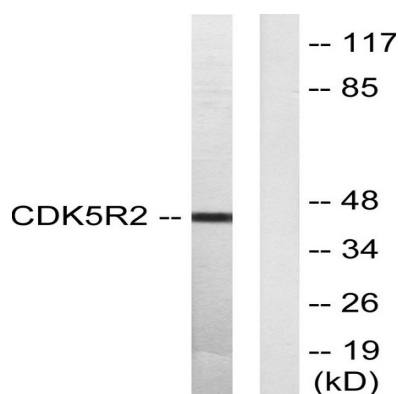


Background

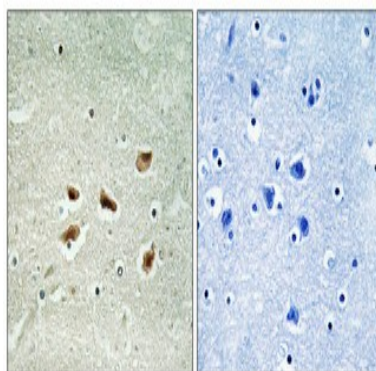
The protein encoded by this gene is a neuron-specific activator of CDK5 kinase. It associates with CDK5 to form an active kinase. This protein and neuron-specific CDK5 activator CDK5R1/p39NCK5A both share limited similarity to cyclins, and thus may define a distinct family of cyclin-dependent kinase activating proteins. [provided by RefSeq, Jul 2008],function:Activator of CDK5/TPKII.,similarity:Belongs to the cyclin-dependent kinase 5 activator family.,subunit:Heterodimer of a catalytic subunit and a regulatory subunit.,tissue specificity:Brain and neuron specific.,

Research Area

Image Data

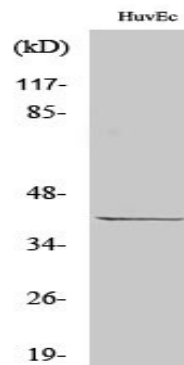


Western blot analysis of lysates from HUVEC cells, using CDK5R2 Antibody. The lane on the right is blocked with the synthesized peptide.



Immunohistochemical analysis of paraffin-embedded Human brain. Antibody was diluted at 1:100 (4° overnight) . High-pressure and temperature Tris-EDTA,pH8.0 was used for antigen retrieval. Negative contrl (right) obtaned from antibody was pre-absorbed by immunogen peptide.

Product Name: p39 Rabbit Polyclonal Antibody
Catalog #: APRab15624



Western Blot analysis of various cells using p39 Polyclonal Antibody cells nucleus extracted by Minute TM Cytoplasmic and Nuclear Fractionation kit (SC-003, Inventbiotech, MN, USA) .

Note

For research use only.