
Summary

Production Name	P2Y11 Rabbit Polyclonal Antibody
Description	Rabbit Polyclonal Antibody
Host	Rabbit
Application	WB,ELISA
Reactivity	Human,Rat,Mouse

Performance

Conjugation	Unconjugated
Modification	Unmodified
Isotype	IgG
Clonality	Polyclonal
Form	Liquid
Storage	Store at 4°C short term. Aliquot and store at -20°C long term. Avoid freeze/thaw cycles.
Buffer	Liquid in PBS containing 50% glycerol, 0.5% BSA and 0.02% New type preservative N.
Purification	Affinity purification

Immunogen

Gene Name	P2RY11
Alternative Names	P2RY11; P2Y purinoceptor 11; P2Y11
Gene ID	5032.0
SwissProt ID	Q96G91.The antiserum was produced against synthesized peptide derived from human P2RY11. AA range:140-189

Application

Dilution Ratio	WB 1:500 - 1:2000. ELISA: 1:10000. Not yet tested in other applications.
Molecular Weight	48kD

Background

Product Name: P2Y11 Rabbit Polyclonal Antibody
Catalog #: AP Rab15607

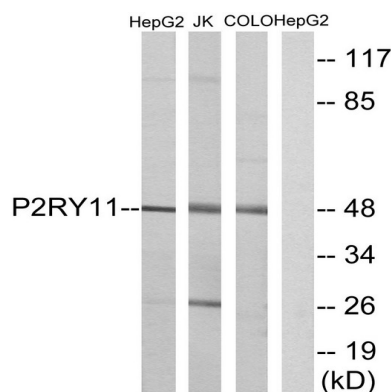


The product of this gene belongs to the family of G-protein coupled receptors. This family has several receptor subtypes with different pharmacological selectivity, which overlaps in some cases, for various adenosine and uridine nucleotides. This receptor is coupled to the stimulation of the phosphoinositide and adenylyl cyclase pathways and behaves as a selective purinoceptor. Naturally occurring read-through transcripts, resulting from intergenic splicing between this gene and an immediately upstream gene (PPAN, encoding peter pan homolog), have been found. The PPAN-P2RY11 read-through mRNA is ubiquitously expressed and encodes a fusion protein that shares identity with each individual gene product. [provided by RefSeq, Jul 2008],function:Receptor for ATP and ADP coupled to G-proteins that activate both phosphatidylinositol-calcium and adenylyl cyclase second messenger systems. Not activated by UTP or UDP.,induction:Increased by DMSO and retinoic acid.,miscellaneous:A putative trans-splicing which involves PPAN and P2RY11 gene regions produces a fusion protein.,similarity:Belongs to the G-protein coupled receptor 1 family.,tissue specificity:Highest expression in the spleen, lower in the small intestine.,

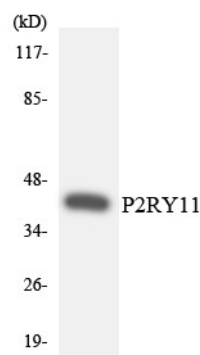
Research Area

Neuroactive ligand-receptor interaction;

Image Data

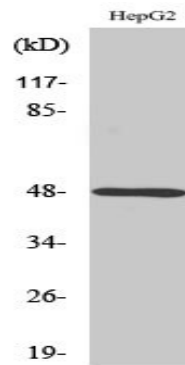


Western blot analysis of lysates from HepG2, Jurkat, and COLO cells, using P2RY11 Antibody. The lane on the right is blocked with the synthesized peptide.



Western blot analysis of the lysates from K562 cells using P2RY11 antibody.

Product Name: P2Y11 Rabbit Polyclonal Antibody
Catalog #: APRab15607



Western Blot analysis of various cells using P2Y11 Polyclonal Antibody

Note

For research use only.