

Summary

Production Name	P2Y10 Rabbit Polyclonal Antibody
Description	Rabbit Polyclonal Antibody
Host	Rabbit
Application	WB
Reactivity	Human,Mouse

Performance

Conjugation	Unconjugated
Modification	Unmodified
Isotype	IgG
Clonality	Polyclonal
Form	Liquid
Storage	Store at 4°C short term. Aliquot and store at -20°C long term. Avoid freeze/thaw cycles.
Buffer	Liquid in PBS containing 50% glycerol, and 0.02% New type preservative N.
Purification	Affinity purification

Immunogen

Gene Name	P2RY10
Alternative Names	
Gene ID	27334.0
SwissProt ID	O00398.Synthesized peptide derived from human protein . at AA range: 80-160

Application

Dilution Ratio	WB 1:500-2000 ELISA 1:5000-20000
Molecular Weight	37kD

Background

The protein encoded by this gene belongs to the family of G-protein coupled receptors that are preferentially activated by adenosine and uridine nucleotides. There is a pseudogene for this gene nearby on chromosome X. Multiple alternatively

Product Name: P2Y10 Rabbit Polyclonal Antibody
Catalog #: APRab15606

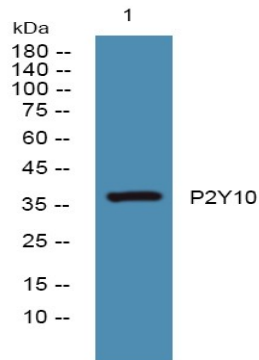


spliced transcripts have been observed. [provided by RefSeq, Apr 2016],developmental stage:Up-regulated during promyelocytic cell differentiation along the monocytic pathway, but not during granulocytic differentiation.,function:Putative receptor for purines coupled to G-proteins.,similarity:Belongs to the G-protein coupled receptor 1 family.,tissue specificity:Weakly expressed in blood leukocytes.,

Research Area

Neuroactive ligand-receptor interaction;

Image Data



Western blot analysis of lysates from K562 cells, primary antibody was diluted at 1:1000, 4° over night

Note

For research use only.