

**Product Name: p23 Rabbit Polyclonal Antibody**  
**Catalog #: APRab15590**



## Summary

<b>Production Name</b>	p23 Rabbit Polyclonal Antibody
<b>Description</b>	Rabbit Polyclonal Antibody
<b>Host</b>	Rabbit
<b>Application</b>	IHC,WB,
<b>Reactivity</b>	Human,Mouse,Rat

## Performance

<b>Conjugation</b>	Unconjugated
<b>Modification</b>	Unmodified
<b>Isotype</b>	IgG
<b>Clonality</b>	Polyclonal
<b>Form</b>	Liquid
<b>Storage</b>	Store at 4°C short term. Aliquot and store at -20°C long term. Avoid freeze/thaw cycles.
<b>Buffer</b>	Liquid in PBS containing 50% glycerol, 0.5% BSA and 0.02% New type preservative N.
<b>Purification</b>	Affinity purification

## Immunogen

<b>Gene Name</b>	PTGES3 PTGES3; P23; TEBP; Prostaglandin E synthase 3; Cytosolic prostaglandin E2 synthase;
<b>Alternative Names</b>	cPGES; Hsp90 co-chaperone; Progesterone receptor complex p23; Telomerase-binding protein p23
<b>Gene ID</b>	10728.0
<b>SwissProt ID</b>	Q15185.The antiserum was produced against synthesized peptide derived from human TEBP. AA range:79-128

## Application

<b>Dilution Ratio</b>	WB 1:500 - 1:2000. IHC 1:100 - 1:300. ELISA: 1:10000..
<b>Molecular Weight</b>	24kD

**Product Name: p23 Rabbit Polyclonal Antibody**  
**Catalog #: APRab15590**

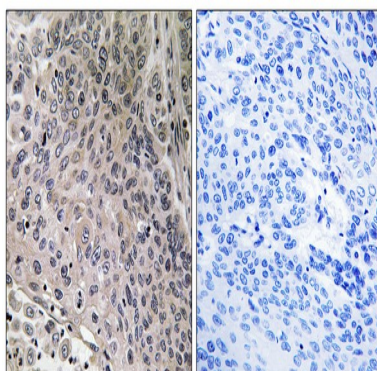


## Background

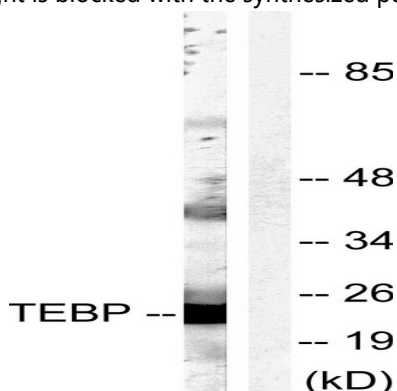
This gene encodes an enzyme that converts prostaglandin endoperoxide H2 (PGH2) to prostaglandin E2 (PGE2). This protein functions as a co-chaperone with heat shock protein 90 (HSP90), localizing to response elements in DNA and disrupting transcriptional activation complexes. Alternative splicing results in multiple transcript variants. There are multiple pseudogenes of this gene on several different chromosomes. [provided by RefSeq, Feb 2016], catalytic activity: (5Z,13E)-(15S)-9-alpha,11-alpha-epidioxy-15-hydroxyprosta-5,13-dienoate = (5Z,13E)-(15S)-11-alpha,15-dihydroxy-9-oxoprosta-5,13-dienoate, function: Molecular chaperone that localizes to genomic response elements in a hormone-dependent manner and disrupts receptor-mediated transcriptional activation, by promoting disassembly of transcriptional regulatory complexes, pathway: Lipid metabolism; prostaglandin biosynthesis, similarity: Belongs to the p23/wos2 family, similarity: Contains 1 CS domain, subunit: Binds to telomerase and to the progesterone receptor,

## Research Area

## Image Data



Immunohistochemistry analysis of paraffin-embedded human breast carcinoma tissue, using TEBP Antibody. The picture on the right is blocked with the synthesized peptide.

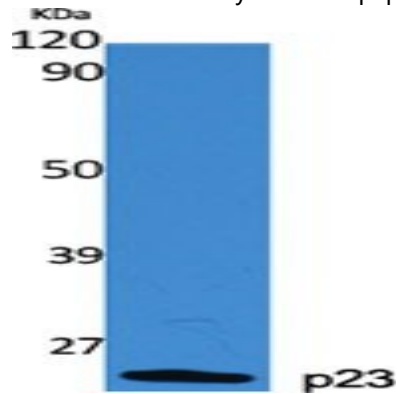


Western blot analysis of lysates from NIH/3T3 cells, treated with EGF 200ng/ml 30', using TEBP Antibody. The lane on the right is blocked with the synthesized peptide.

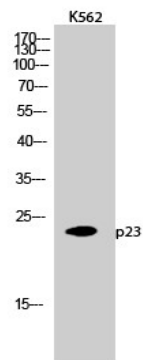
**Product Name: p23 Rabbit Polyclonal Antibody**  
**Catalog #: APRab15590**



right is blocked with the synthesized peptide.



Western Blot analysis of various cells using p23 Polyclonal Antibody diluted at 1: 2000



Western Blot analysis of K562 cells using p23 Polyclonal Antibody diluted at 1: 2000

## Note

For research use only.