
Summary

Production Name	p140Cap Rabbit Polyclonal Antibody
Description	Rabbit Polyclonal Antibody
Host	Rabbit
Application	WB,ELISA
Reactivity	Human,Mouse,Rat

Performance

Conjugation	Unconjugated
Modification	Unmodified
Isotype	IgG
Clonality	Polyclonal
Form	Liquid
Storage	Store at 4°C short term. Aliquot and store at -20°C long term. Avoid freeze/thaw cycles.
Buffer	Liquid in PBS containing 50% glycerol, 0.5% BSA and 0.02% New type preservative N.
Purification	Affinity purification

Immunogen

Gene Name	SRCIN1
Alternative Names	SRCIN1; KIAA1684; P140; SRC kinase signaling inhibitor 1; SNAP-25-interacting protein; SNIP; p130Cas-associated protein; p140Cap
Gene ID	80725.0
SwissProt ID	Q9C0H9.The antiserum was produced against synthesized peptide derived from human SNIP. AA range:811-860

Application

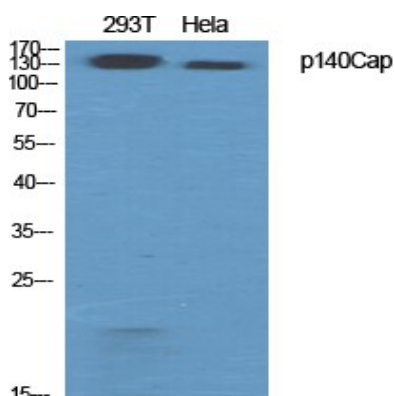
Dilution Ratio	WB 1:500 - 1:2000. ELISA: 1:20000
Molecular Weight	112kD

Background

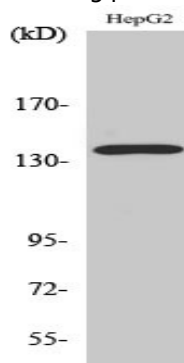
function: Delays the onset of cell spreading in the early stages of cell adhesion to fibronectin. Also involved in calcium-dependent exocytosis from PC12 cells.,PTM: Tyrosine-phosphorylated in response to EGF and to cell adhesion to integrin ligands.,similarity: Belongs to the p140Cap family.,subcellular location: Localized to the perinuclear region, lamellopodia, cortical actin and actin stress fibers but not to focal adhesions.,subunit: Interacts with the N-terminal coiled-coil region of SNAP25 (By similarity). Interacts with BCAR1/p130Cas through its C-terminal domain.,function: Delays the onset of cell spreading in the early stages of cell adhesion to fibronectin. Also involved in calcium-dependent exocytosis from PC12 cells.,PTM: Tyrosine-phosphorylated in response to EGF and to cell adhesion to integrin ligands.,similarity: Belongs to the p140Cap family.,subcellular location: Localized to the perinuclear region, lamellopodia, cortical actin and actin stress fibers but not to focal adhesions.,subunit: Interacts with the N-terminal coiled-coil region of SNAP25 (By similarity). Interacts with BCAR1/p130Cas through its C-terminal domain.,

Research Area

Image Data



Western Blot analysis of various cells using p140Cap Polyclonal Antibody diluted at 1: 500



Western Blot analysis of HeLa cells using p140Cap Polyclonal Antibody diluted at 1: 500

Product Name: p140Cap Rabbit Polyclonal Antibody
Catalog #: APRab15572



Note

For research use only.